

FA2 Max

Outdoor Front Access LED Display



Lightweight



High stability



Cable Free



Cost-effective



≥ 10000nits



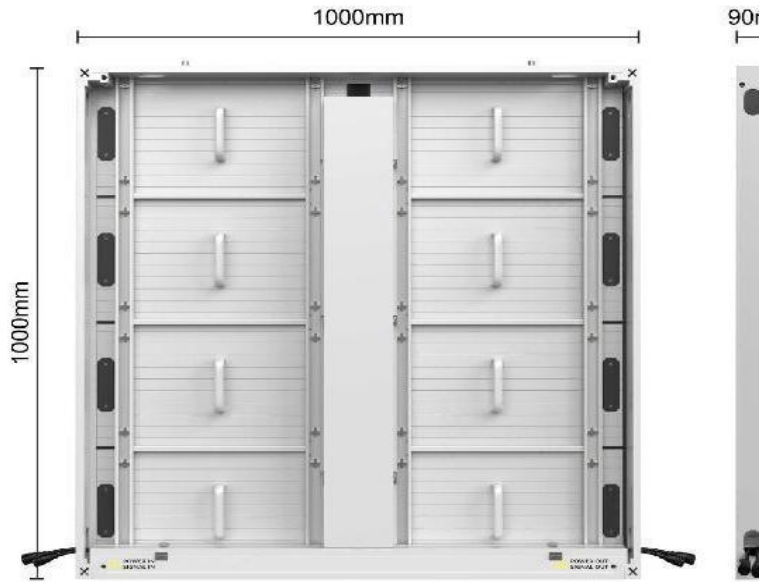
50% Energy Saved



Aluminium Module Case



IP66



Slim and lightweight design

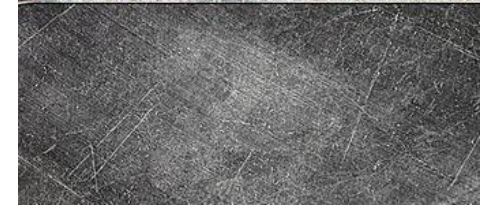
The aluminum cabinet is designed to be 28kgs lighter than conventional cabinets in the market. Lighter cabinets provide more convenience for installation. 1m by 1m panel size can be easily assembled into big screen of different dimensions. In order to fit some special screen areas, we can also make other panel sizes.

- 1m(w) x 1m(h), 1.5m(w) x 1m(h), 1m(w) x 0.5m(h), 1.5m(w) x 0.5m(h)
- 90mm thickness
- 28.5kgs weight

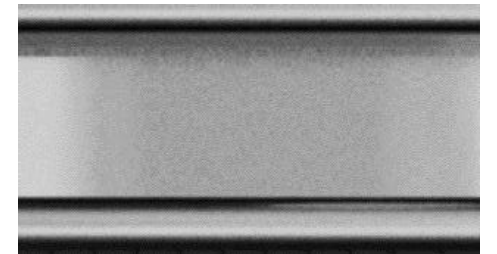
The pixel pitch P2.9, P3.9, P4.8, P6.2, P7.8 and P10.4 are available.

Better heat dissipation

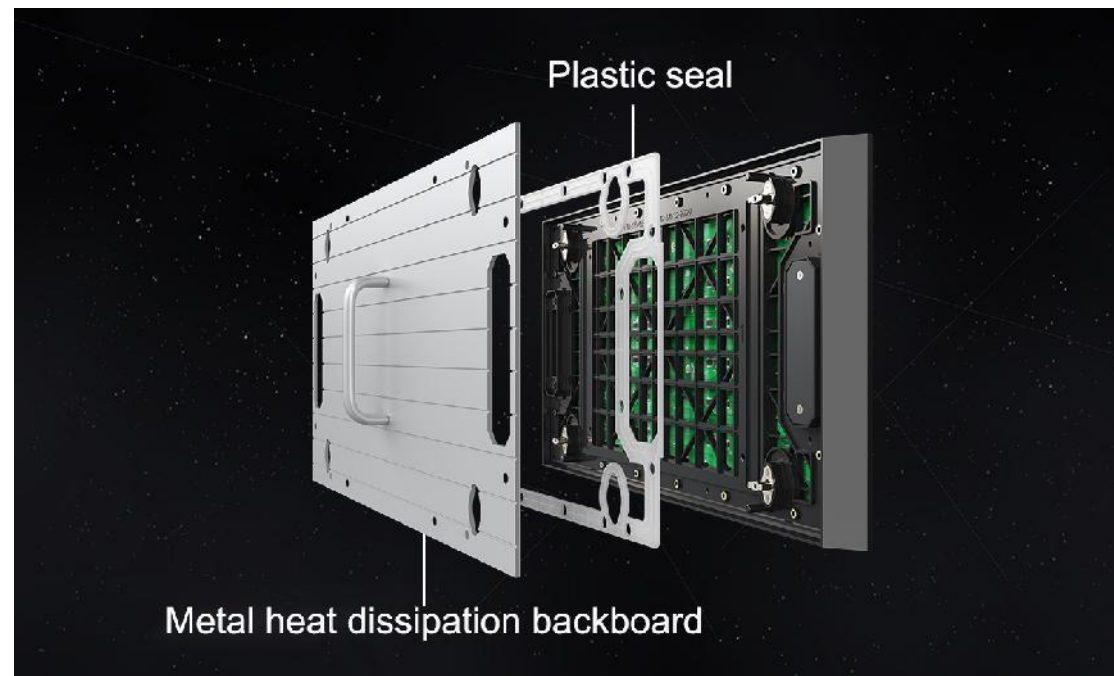
All aluminum material is more durable and highly stable than traditional steel one. Meanwhile, heat dissipation of aluminum is much better than others in the market. As the electronic components can be cooled down quickly, their lifespan will be longer.



Steel



Aluminum



Cable free with dual sockets

This design doesn't require the ribbon cable, so the signal connection of the modules is much better than common designs in the market.

What's more, we use signal pin dual sockets which is easy to replace modules. There is no need to confuse about the direction.

Fast front access

Front access design which is more convenient for installation. The concise structure and light weight are designed to reduce the pressure of construction and transportation. The modules, power supply, receiving card, and other components can be disassembled from the front, which is convenient for the maintainer to maintain the LED screen.

At the same time, traditional rear maintenance is also supported. You could choose anyone according to the actual situation.





Extremely Protective Method: IP 66

The LED screen in outdoor scenes will face more challenges than the indoor ones such as the damage of dust and water. To make the LED screen function safely and stably in outdoor scenes, we adopt advanced protective methods to withstand heavy rain and strong winds for a long time. The IP66 design can isolate electronic parts from humidity and dust, so the screen is more reliable.

Energy conservation

1) Maximum power consumption: 550W/sqm.

The maximum power consumption of other products in the market is 800 w/sam, while that of our products is only 550 w/sqm. The dual power supply design saves half power consumption, which is superior to the traditional use.

2) Two brightness options: 6000nits and 10000nits.

6000nits brightness: the product can work properly for more than 5 years with a 2-year warranty

10000nits brightness:the screen can work properly for more than 8 years with a 5-year warranty.



Energy saving

HUB connection





Application Fields

To fit every different scene, our products utilize superior materials with a concise and strong structure, and various installation methods make it flexible and easy to apply.

This product is usually used in.

- **Truck Trailers;**
- **Scoreboards;**
- **Digital Out Of Home(DOOH).**

