

AP1 Series

Outdoor LED Display Banner –P2, P3, P4, P5



Light Weight



Thin Screen



Various Designs



Stable Performance



High Brightness



Easy Operation

Outdoor Advertisements Player

AP1 series are our outdoor advertising player LED display products. They are also called totem LED displays, which are usually used in shopping plaza, train station, airport, etc.

It aims at different kinds of outdoor advertisements. The pixel pitches are P2.9, P3, P4 and P5.



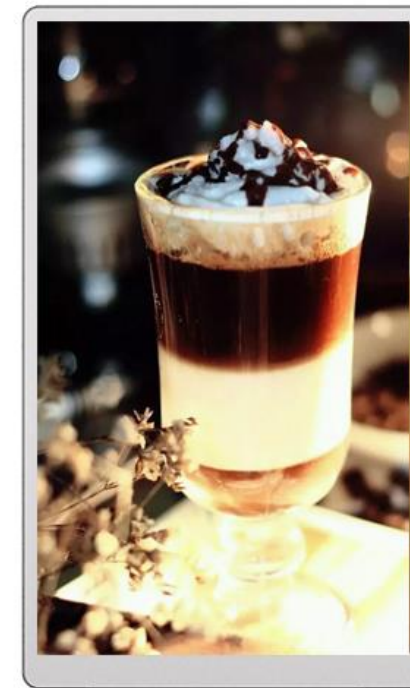
 Light Weight: 85 KG



 Thin Screen:
about 200mm



 Various Designs: different
screen sizes available





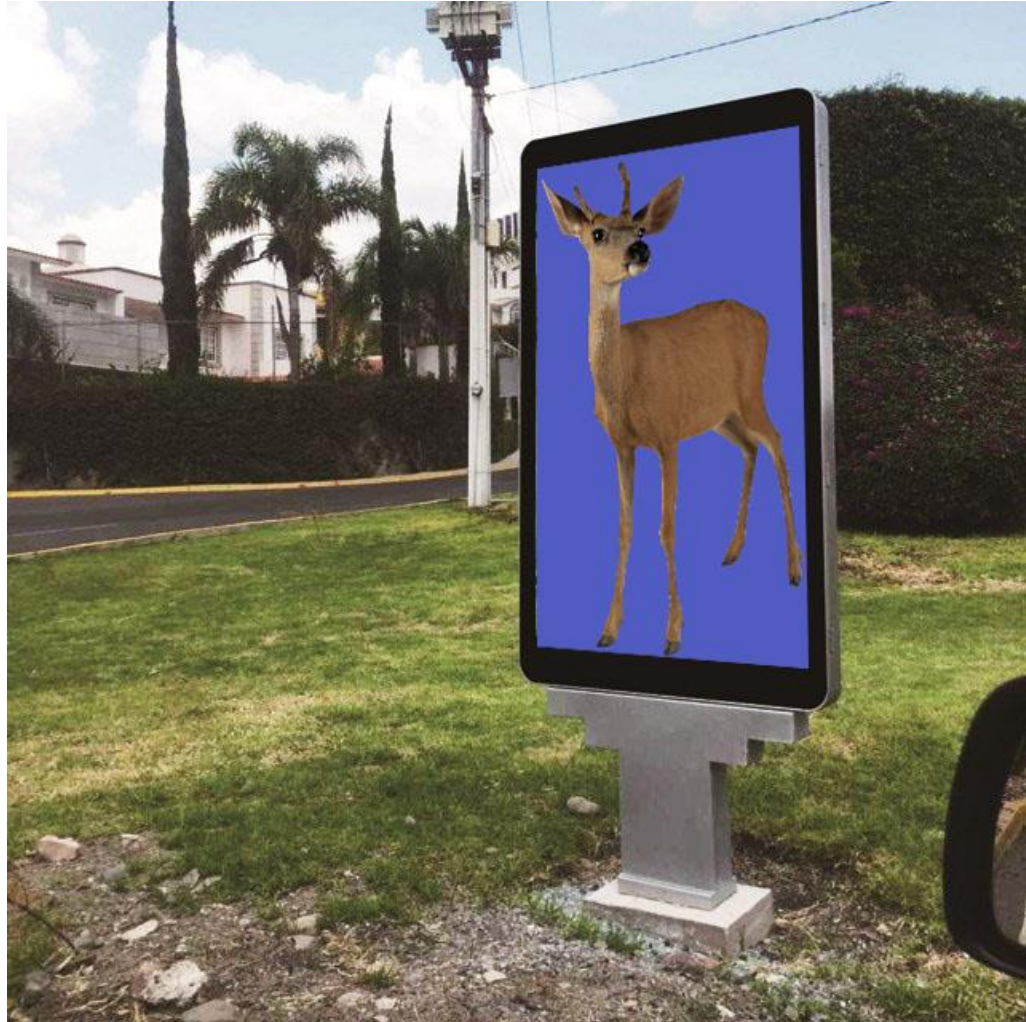
High Technical Parameter

Our outdoor digital LED screens use very good materials so that its gray scale can be up to 16 bits, IP grade can be up to IP65, and refresh rate can be up to 3840Hz.

Stable and Perfect Performance

Superior brand power supply is adopted. High quality LED materials with excellent PCB design ensure the performance of the products.





High Brightness

Advanced LED materials are used and the brightness of the screen can be up to 6000nits. The display has very good clarity in sunlight.

Easy Operation

The screen can support Wi-Fi, CAT5, and even remote control via internet. It can run videos, images, texts, etc. without computers after the display content is uploaded.



Application Fields

To fit every different scene, our products utilize superior materials with the concise and strong structure. This product is usually used in:

- **Mall Advertisement;**
- **Outdoor Advertising;**
- **Digital Out Of Home(DOOH).**



AP1 Parameters

Item	P2.9	P3	P4	P5
Pixel Pitch	2.976mm	3mm	4mm	5mm
LED Type	SMD1415	SMD1415	SMD1921	SMD2727
Module Resolution	84dots × 84dots	64dots × 64dots	64dots × 32dots	64dots × 32dots
Driving Mode	1/14scan	1/16scan	1/8scan	1/8scan
Module Pixels	7,056dots	4,096dots	2,048dots	2,048dots
Module Size	250mm × 250mm	192mm × 192mm	256mm × 128mm	320mm × 160mm
Panel display Size	750mm × 1,500mm	768mm × 1,536mm	768mm × 1,536mm	640mm × 1,600mm
Panel display Resolution	252dots × 504dots	256dots × 512dots	192dots × 384dots	128dots × 320dots
Pixel Density	112,896dots/m ²	111,111dots/m ²	62,500dots/m ²	40,000dots/m ²
Minimum Viewing Distance	≥2.9m	≥3m	≥4m	≥5m
Brightness	5,000nits~6,000nits	5,000nits~6,000nits	5,000nits~6,000nits	5,000nits~6,000nits
IP Grade	IP65	IP65	IP65	IP65
Refresh Rate	1,920Hz~3,840Hz	1,920Hz~3,840Hz	1,920Hz~3,840Hz	1,920Hz~3,840Hz
Gray Scale	13 bits~16bits	13 bits~16bits	13 bits~16bits	13bits~16bits
Viewing Angle	H:160° / V:160°	H:160° / V:160°	H:160° / V:160°	H:160° / V:160°
Maximum Power Consumption	850W/m ²	850W/m ²	750W/m ²	750W/m ²
Average Power Consumption	300W/m ²	300W/m ²	240W/m ²	240W/m ²
Input Voltage	AC220V~AC110V @ 50Hz / 60Hz	AC220V~AC110V @ 50Hz / 60Hz	AC220V~AC110V @ 50Hz / 60Hz	AC220V~AC110V @ 50Hz / 60Hz
Operating Temperature	-20℃~65℃	-20℃~65℃	-20℃~65℃	-20℃~65℃
Operating Humidity	10%~90%	10%~90%	10%~90%	10%~90%
Cabinet Material	Iron	Iron	Iron	Iron
Weight of Machine	82kg/pc	85kg/pc	85kg/pc	80kg/pc
Dimension of Machine	830mm(w) x 1,660mm(h) x 130mm(d)	850mm(w) x 1,700mm(h) x 130mm(d)	850mm(w) x 1,700mm(h) x 130mm(d)	720mm(w) x 1,760(h) x 130mm(d)
Operating System	Windows (Win7, Win8, etc.)	Windows (Win7, Win8, etc.)	Windows (Win7, Win8, etc.)	Windows (Win7, Win8, etc.)
Signal Source Compatibility	DVI, HDMI1.3, DP1.2, SDI, HDMI2.0, etc.	DVI, HDMI1.3, DP1.2, SDI, HDMI2.0, etc.	DVI, HDMI1.3, DP1.2, SDI, HDMI2.0, etc.	DVI, HDMI1.3, DP1.2, SDI, HDMI2.0, etc.