




# OA2 Series

SMD Outdoor LED Display-P1.9, P2.6, P3, P4, P6, P8, P10




 10,000nits

 High Resolution

 Energy Saving

 Wide Viewing Angle (160°)

 IP65

 1920Hz-3840Hz

 High Contrast

 3 Layers Coating Protection



## High Brightness

High quality LED brings brightness up to 10,000nits.

The pixel pitches are P1.9, P2.6, P2.9, P3, P4, P5, P6, P8, and P10.

## High Resolution

Fine pixel pitches form high resolution which can capture and hold the attention of passersby.





## Energy Saving

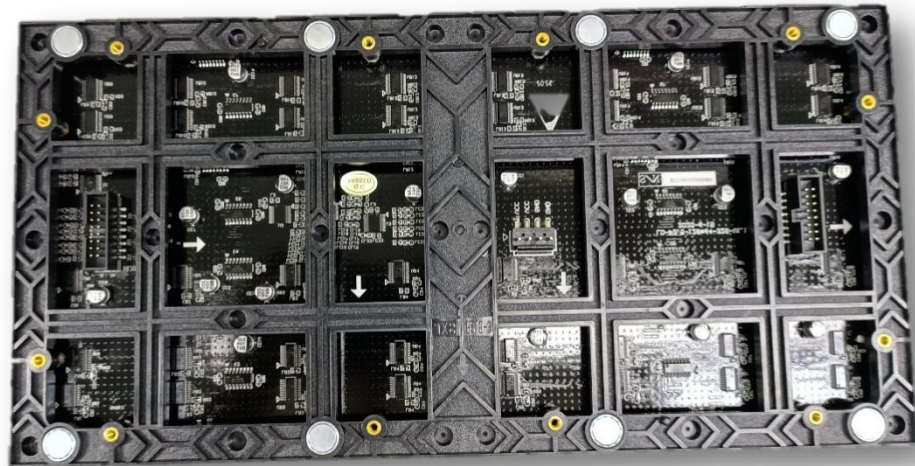
We use customized PCB and power supply, so average power consumption is less than  $150\text{W}/\text{m}^2$ . Compared with the similar products in the market, our OA2 series LED display saves 20% energy.

## Ultra-wide Viewing Angle

With 160° wide viewing angle, the screen can be seen from as various positions as possible.







## Three Layers Coating Protection

Three layers high quality conformal coating protects the driving IC and other electron components from dust and humidity.

## High Refresh Rate

3840Hz refresh rate for high dynamic range pictures eliminates scan lines and flicker on the display at the moment we capture the display.

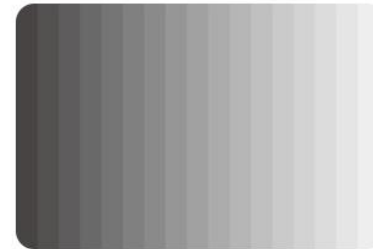
High grayscale ensures the premium vision and the LED display has vivid visual performance.



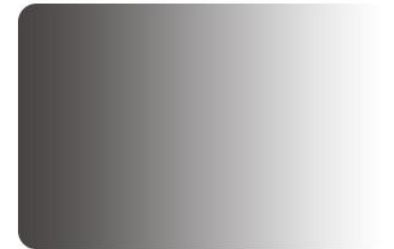
Low Refresh Rate



High Refresh Rate



Low Grayscale



High Grayscale



## **IP65 Grade Protection**

IP65 ensures stable operation of the screen even in extreme weather as below: high temperature, low temperature and high humidity.



- High Contrast : The contrast ratio of the LED screen gives a sharp image quality
- High Brightness: The brightness of the LED display can be up to 10,000nits. Even the screen is facing direct sunlight, the image still looks clear.





## Application Fields

- Outdoor Advertising
- DOOH
- Truck



# OA2 Parameters

Item	P1.9	P2. 5	P2.6	P2.9	P3
Pixel Pitch	1.953mm	2. 50mm	2.604mm	2.976mm	3mm
LED Type	SMD1212	SMD1515	SMD1415	SMD1415	SMD1415
Module Resolution	128dots × 128dots	128dots x 64dots	96dots × 96dots	84dots × 84dots	64dots × 64dots
Driving Mode	1/32scan	1/16scan	1/16scan	1/14scan	1/16scan
Module Pixels	16,384dots	8, 192dots	9,216dots	7,056dots	4,096dots
Module Size	250mm × 250mm	320mmx160mm	250mm × 250mm	250mm × 250mm	192mm × 192mm
Cabinet Size	500mm × 500mm	960mmx960mm	500mm × 500mm	500mm × 500mm	960mm × 960mmm
Cabinet Resolution	256dots × 256dots	384dotsx384dots	192dots × 192dots	168dots × 168dots	320dots × 320dots
Pixel Density	262,144dots/m²	160, 000dots/m²	147,456dots/m²	112,896dots/m²	111,111dots/m²
Minimum Viewing Distance	≥1.9m	≥2. 5m	≥2.6m	≥2.9 m	≥3m
Brightness	4,000nits (Black)	4, 000nits(Black)	4,000nits (Black)	4,000nits (Black)	6,000nits
IP Grade	IP65	IP65	IP65	IP65	IP65
Refresh Rate	1,920Hz~3,840Hz	1, 920Hz~3, 840Hz	1,920Hz~3,840Hz	1,920Hz~3,840Hz	1,920Hz~3,840Hz
Gray Scale	13 bits~24bits	13 bits~24bits	13 bits~24bits	13 bits~24bits	13 bits~24bits
Viewing Angle	H:160° / V:160°	H:160° / V:160°	H:160° / V:160°	H:160° / V:160°	H:160° / V:160°
Maximum Power Consumption	800W/m²	800W /m²	800W/m²	800W/m²	800W/m²
Average Power Consumption	230W/m²	230W /m²	230W/m²	230W/m²	230W/m²
Input Voltage	AC220V~AC110V @ 50Hz / 60Hz	AC220V~AC110V @ 50Hz / 60Hz	AC220V~AC110V @ 50Hz / 60Hz	AC220V~AC110V @ 50Hz / 60Hz	AC220V ~ AC110V @ 50Hz / 60Hz
Operating Temperature	- 20℃~65℃	- 20℃~65℃	- 20℃~65℃	- 20℃~65℃	- 20℃~65℃
Operating Humidity	10%~90%	10%~90%	10%~90%	10%~90%	10%~90%
Cabinet Material	Die-casting Aluminum	Die-casting Aluminum	Die-casting Aluminum	Die-casting Aluminum	Iron / Aluminum
Cabinet Weight	30kg/m²	30kg/m²	30kg/m²	30kg/m²	60kg/m² or 45kg/m²
Operating System	Windows (Win7, Win8, etc.)	Windows (Win7, Win8, etc.)	Windows (Win7, Win8, etc.)	Windows (Win7, Win8, etc.)	Windows (Win7, Win8, etc.)
Signal Source Compatibility	DVI, HDMI1.3, DP1.2, SDI, HDMI2.0, etc.	DVI, HDMI1.3, DP1.2, SDI, HDMI2.0, etc.	DVI, HDMI1.3, DP1.2, SDI, HDMI2.0, etc.	DVI, HDMI1.3, DP1.2, SDI, HDMI2.0, etc.	DVI, HDMI1.3, DP1.2, SDI, HDMI2.0, etc.

# OA2 Parameters

Item	P4	P5	P6	P8	P10
Pixel Pitch	4mm	5mm	6mm	8mm	10mm
LED Type	SMD1921	SMD2727	SMD2727	SMD3535	SMD3535
Module Resolution	64dots × 32dots	64dots × 32dots	32dots × 32dots	32dots × 16dots	32dots × 16dots
Driving Mode	1/8scan	1/8scan	1/8scan	1/4scan	1/2scan
Module Pixels	2,048dots	2,048dots	1,024dots	512dots	512dots
Module Size	256mm × 128mm	320mm × 160mm	192mm × 192mm	256mm × 128mm	320mm × 160mm
Cabinet Size	1,024mm × 1,024mmm	960mm × 960mm	1,152mm × 768mm	1024mm × 768mm	960mm × 960mm
Cabinet Resolution	256dots × 256dots	192dots × 192dots	192dots × 128dots	128dots × 96dots	96dots × 96dots
Pixel Density	62,500dots/m <sup>2</sup>	40,000dots/m <sup>2</sup>	27,777dots/m <sup>2</sup>	15,625dots/m <sup>2</sup>	10,000dots/m <sup>2</sup>
Minimum Viewing Distance	≥4m	≥5m	≥6m	≥8m	≥10m
Brightness	6,000nits ~ 7,000nits	6,000nits ~ 10,000nits	6,000nits ~ 10,000nits	5,500nits ~ 7,000nits	6,000nits ~ 10,000nits
IP Grade	IP65	IP65	IP65	IP65	IP65
Refresh Rate	1,920Hz ~ 3,840Hz	1,920Hz ~ 3,840Hz	1,920Hz ~ 3,840Hz	1,920Hz ~ 3,840Hz	1,920Hz ~ 3,840Hz
Gray Scale	13 bits ~ 24bits	13bits ~ 24bits	13 bits ~ 24bits	13 bits ~ 24bits	13 bits ~ 24bits
Viewing Angle	H:160° / V:160°	H:160° / V:160°	H:160° / V:160°	H:160° / V:160°	H:160° / V:160°
Maximum Power Consumption	800W/m <sup>2</sup>	800W/m <sup>2</sup>	800W/m <sup>2</sup>	800W/m <sup>2</sup>	800W/m <sup>2</sup>
Average Power Consumption	230W/m <sup>2</sup>	230W/m <sup>2</sup>	230W/m <sup>2</sup>	230W/m <sup>2</sup>	230W/m <sup>2</sup>
Input Voltage	AC220V ~ AC110V @ 50Hz / 60Hz	AC220V ~ AC110V @ 50Hz / 60Hz	AC220V ~ AC110V @ 50Hz / 60Hz	AC220V ~ AC110V @ 50Hz / 60Hz	AC220V ~ AC110V @ 50Hz / 60Hz
Operating Temperature	- 20℃ ~ 65℃	- 20℃ ~ 65℃	- 20℃ ~ 65℃	- 20℃ ~ 65℃	- 20℃ ~ 65℃
Operating Humidity	10% ~ 90%	10% ~ 90%	10% ~ 90%	10% ~ 90%	10% ~ 90%
Cabinet Material	Iron / Aluminum	Iron / Aluminum	Iron / Aluminum	Iron / Aluminum	Iron / Aluminum
Cabinet Weight	60kg/m <sup>2</sup> or 45kg/m <sup>2</sup>	60kg/m <sup>2</sup> or 45kg/m <sup>2</sup>	60kg/m <sup>2</sup> or 45kg/m <sup>2</sup>	60kg/m <sup>2</sup> or 45kg/m <sup>2</sup>	60kg/m <sup>2</sup> or 45kg/m <sup>2</sup>
Operating System	Windows (Win7, Win8, etc.)	Windows (Win7, Win8, etc.)	Windows (Win7, Win8, etc.)	Windows (Win7, Win8, etc.)	Windows (Win7, Win8, etc.)
Signal Source Compatibility	DVI, HDMI1.3, DP1.2, SDI, HDMI2.0, etc.	DVI, HDMI1.3, DP1.2, SDI, HDMI2.0, etc.	DVI, HDMI1.3, DP1.2, SDI, HDMI2.0, etc.	DVI, HDMI1.3, DP1.2, SDI, HDMI2.0, etc.	DVI, HDMI1.3, DP1.2, SDI, HDMI2.0, etc.