

FA2 Ultra

Outdoor Front Access LED Display-P4.7, P6.3, P9.5



IP 68



Fanless Design



90-degree angle



Smart, light and thin



≥ 10000nits



Low mounting cost



Quick problem shooting



Rapid Heat Dissipation



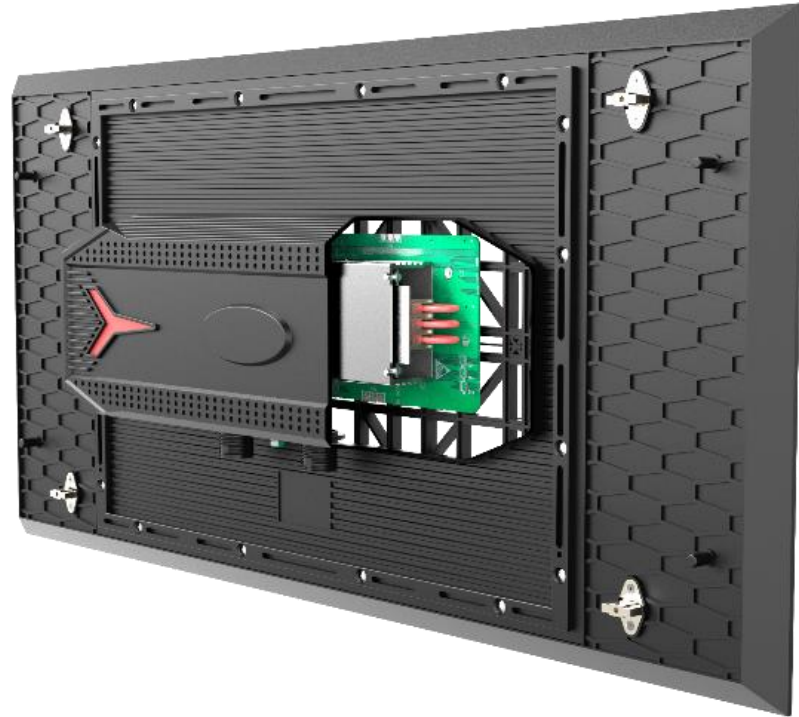
Smart, light and thin

The panel size is 2 ft x 1 ft. The thickness of our FA2 Ultra Series is 63mm including the module, and it only weighs about 3.9 kgs. With its metallic appearance and unique design, the decorative effect of the cabinet is more appreciated, reflecting its nobility and cost.

Quick problem shooting

The power supply, receiving card and module are an integral component. This kind of concise and easy design allows remove and replace modules fast in an emergency, especially when the technician wonder which part has issues. Fast problem solving saves a large amount of labor cost.





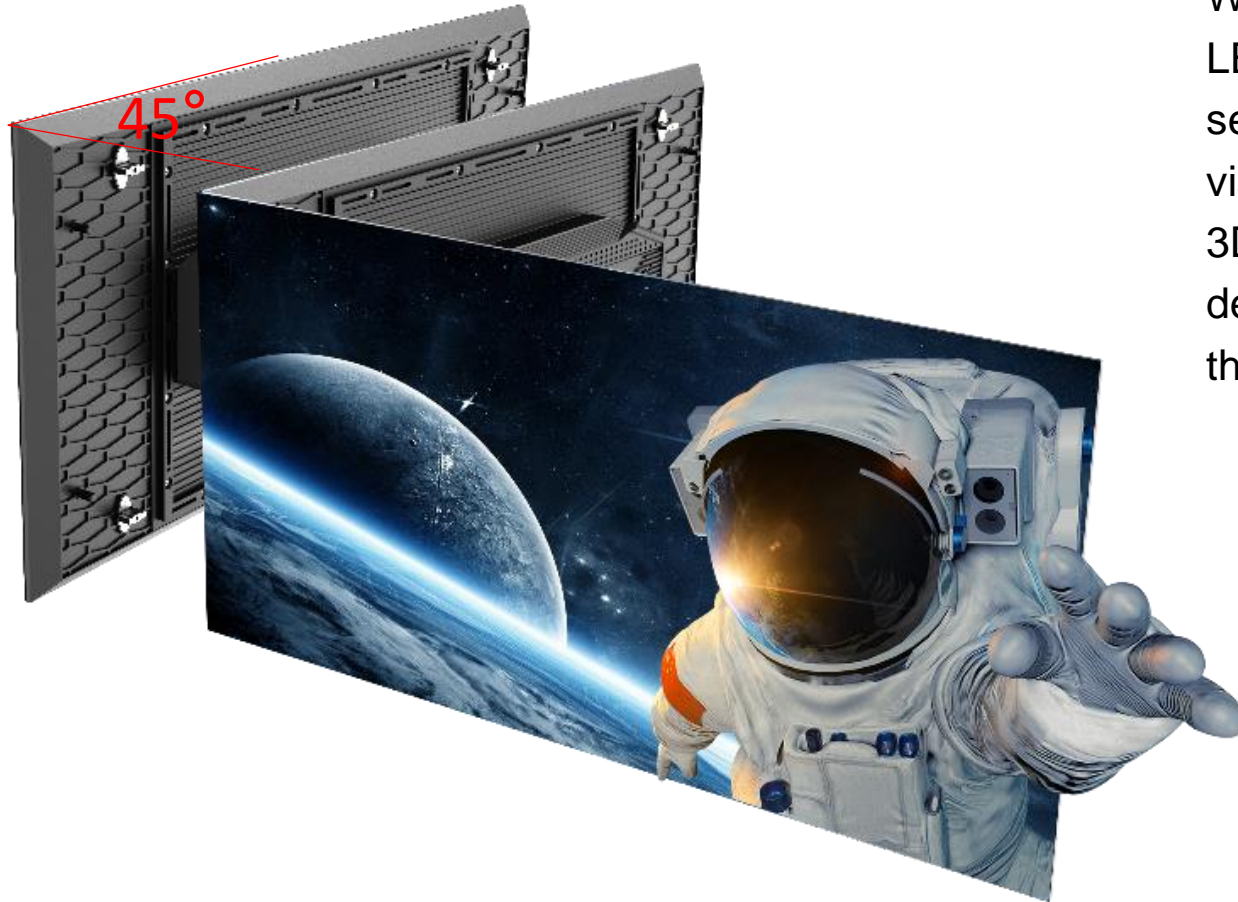
Rapid Heat Dissipation

Aluminium module back shell and power supply casing accelerates heat dissipation. Therefore, the LED screen can work properly without air conditioner even when the weather temperature is as high as 55 degrees. Meanwhile, fanless design enables the screen to work more reliably in dusty environment such as roadside and high humidity places such as seashore.

High reliability, wide application and brightness up to 10,000 nits

With IP 68 design, the item is an ideal DOOH product which suits any kind of working environment: dusty roadside, humid seashore, high temperature locations, rainy regions, etc. Meanwhile, the screen can be used 10000 nits brightness for strong sunlight.





45° cutting Angle design

With 45° cutting angle design, the FA2 Ultra LED display cabinets can be assembled at seamless 90° angles, so in addition to passive visualizations, the screen also can be used for 3D visual effect or a rectangle wall. With friendly design of the shell structure, it brings a strong three-dimensional visual impact.



Low mounting cost

With this choice design, all you have to do is build a very simple framework. And then lock the units on the frame. High grade locking system, minimalist cable connector design and light cabinet make it easy and quick to install, at the same time, for your savings.



Application Fields

This product is usually used in:

- **Truck Trailers;**
- **Scoreboards;**
- **Digital Out Of Home(DOOH).**



FA2 Ultra Parameters

Item	P4.7	P6.3	P9.5
Pixel Pitch	4.7625mm	6.35mm	9.525mm
LED Type	SMD1921	SMD2727	SMD2727
Module Resolution	128dots x 64dots	96dots x 48dots	64dots x 32dots
Driving Mode	1/8scan	1/6scan	1/2scan
Module Pixels	8192dots	4608dots	2048dots
Module Size	2ft x 1ft	2ft x 1ft	2ft x 1ft
Cabinet Size	2ft x 1ft	2ft x 1ft	2ft x 1ft
Cabinet Resolution	128dots x 64dots	96dots x 48dots	64dots x 32dots
Pixel Density	44,088dots/m ²	24,800dots/m ²	11,022dots/m ²
Minimum Viewing Distance	≥4.7 m	≥6.3 m	≥9.5m
Brightness	6,500nits	6500nits ~ 8000nits	6,500nits ~ 10,000nits
IP Grade	IP67	IP67	IP67
Refresh Rate	1,920Hz~3,840Hz	1,920Hz~3,840Hz	1,920Hz~3,840Hz
Gray Scale	13bits~24bits	14bits~24bits	14bits~24bits
Viewing Angle	H:110° / V:110°	H:110° / V:110°	H:110° / V:110°
Maximum Power Consumption	800W/m ²	550W/m ²	550W/m ²
Average Power Consumption	260W/m ²	180W/m ²	180W/m ²
Input Voltage	AC110V - AC220V @ 50Hz/60Hz	AC110V - AC220V @ 50Hz/60Hz	AC110V - AC220V @ 50Hz/60Hz
Operating Temperature	- 20℃~50℃	- 20℃~50℃	- 20℃~50℃
Operating Humidity	10%~90%	10%~90%	10%~90%
Cabinet Material	Die-casting Aluminum	Die-casting Aluminum	Die-casting Aluminum
Cabinet Weight	3.9kg	3.9kg	3.9kg
Operating System	Windows (Win7, Win10etc.)	Windows (Win7, Win10, etc.)	Windows (Win7, Win10, etc.)
Signal Source Compatibility	DVI,HDMI1.3,DP1.2,SDI,HDMI2.0,etc.	DVI,HDMI1.3,DP1.2,SDI,HDMI2.0,etc.	DVI,HDMI1.3,DP1.2,SDI,HDMI2.0,etc.