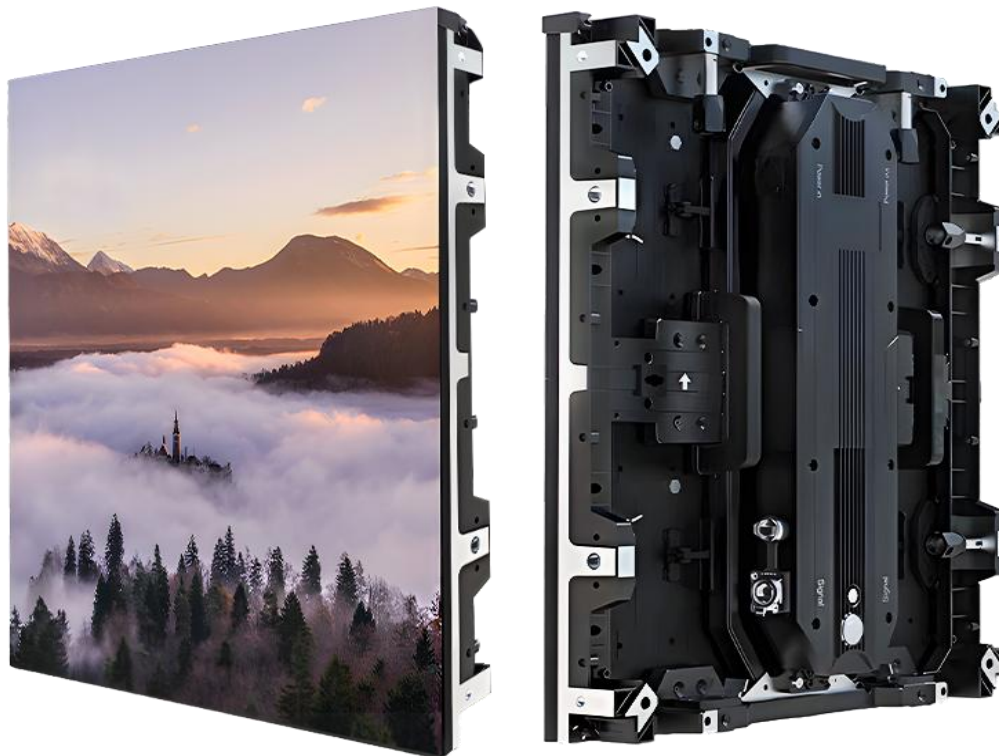


OSP Pro Series

Outdoor Fine Pitch LED Display-P1.5,P1.875,P2.5



Cost-Effective



Front & Rear Access



Thin Screen



Easy Maintenance



Die-Casting Aluminum



Quick Installation

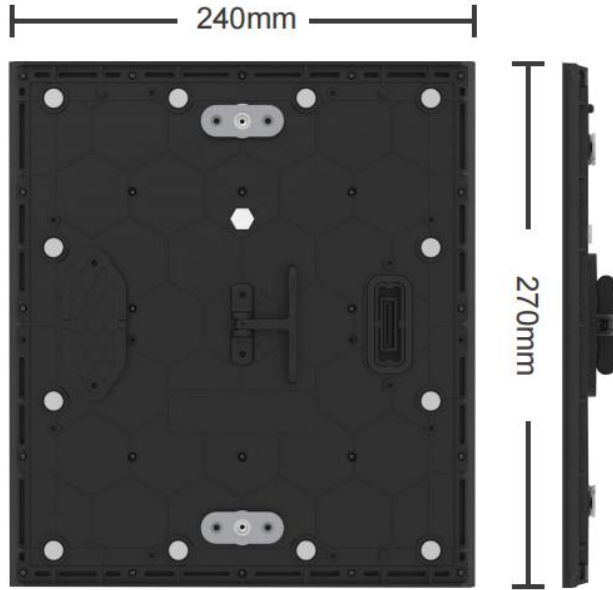


1920Hz ~ 3840Hz



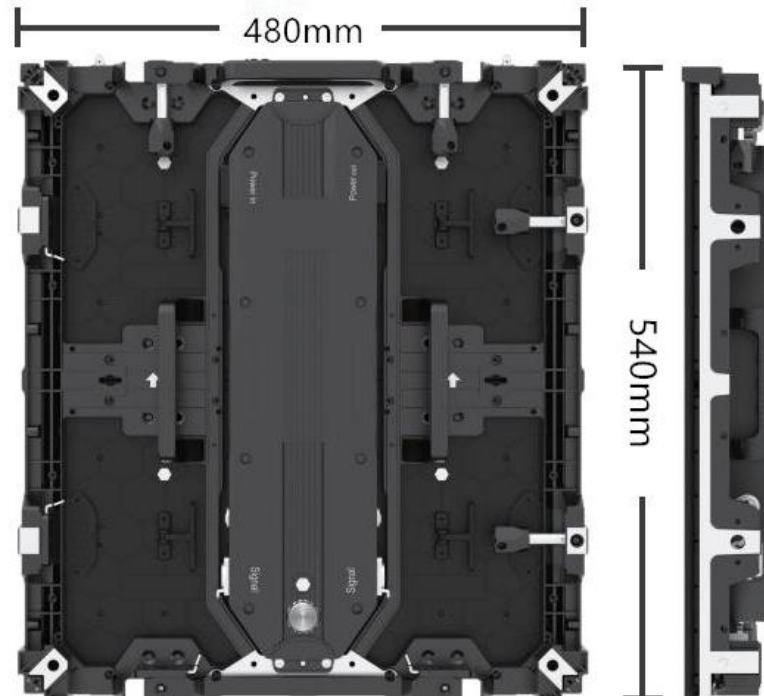
14bits ~ 24bits

Module Size & Cabinet Size



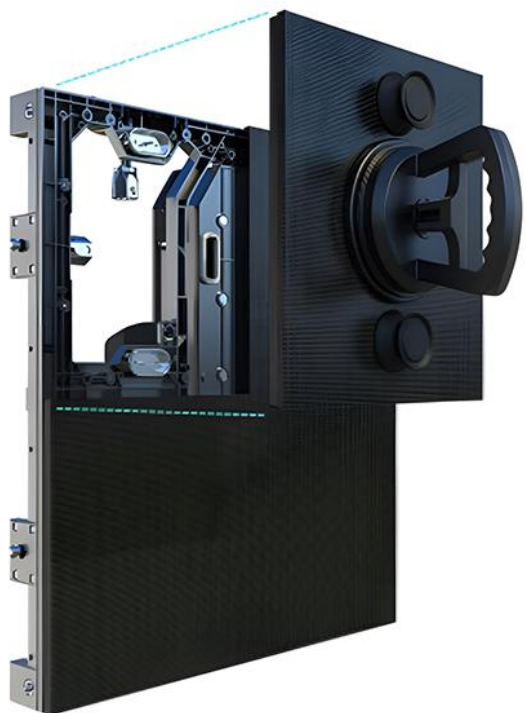
Die-cast Module

- Width: 240mm
- Height: 270mm
- Thickness:13.5mm



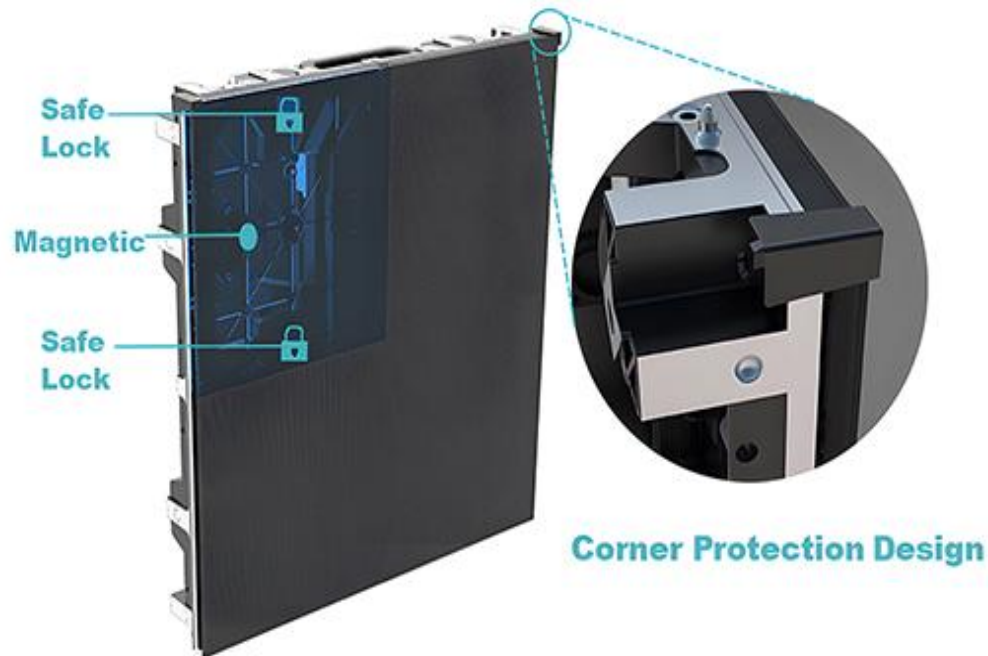
Die-cast Cabinet

- Width:480mm
- Height:540mm
- Thickness:66mm
- Weight:9.5kg
- Width height ratio: 8:9



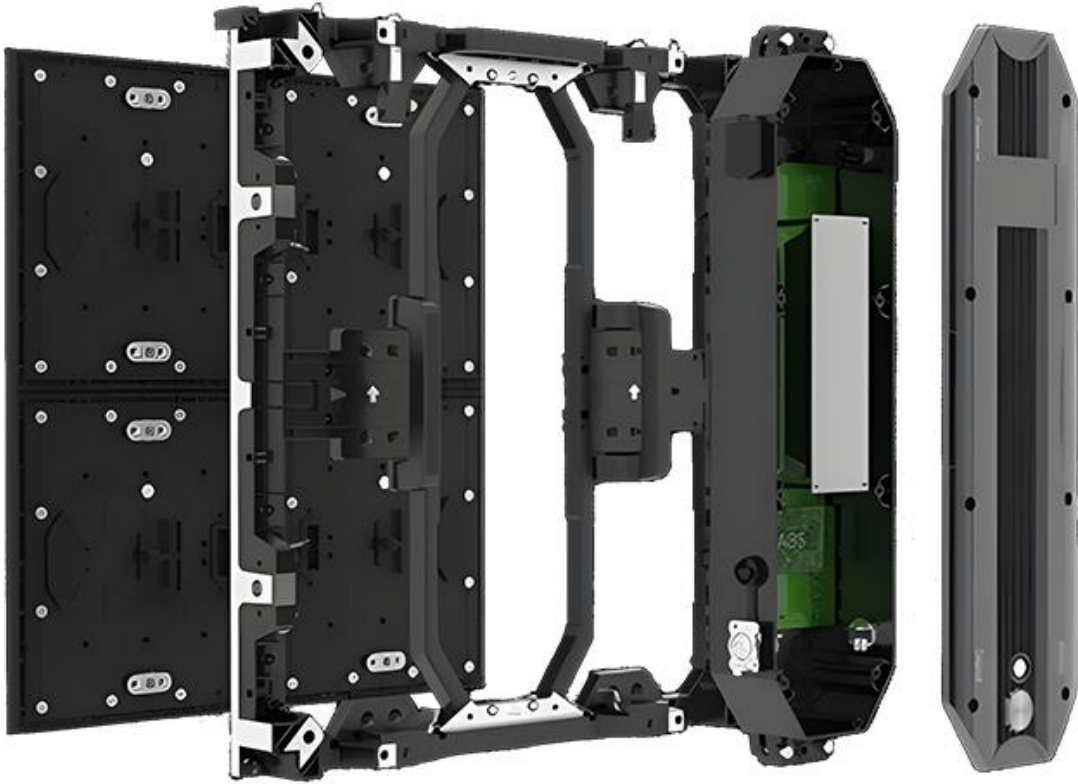
Magnetic Adsorption Design

The module adopts a strong magnetic adsorption design, which not only makes the module more stable and faster to install, but also increases the flatness of the whole screen.



Safe Lock Design

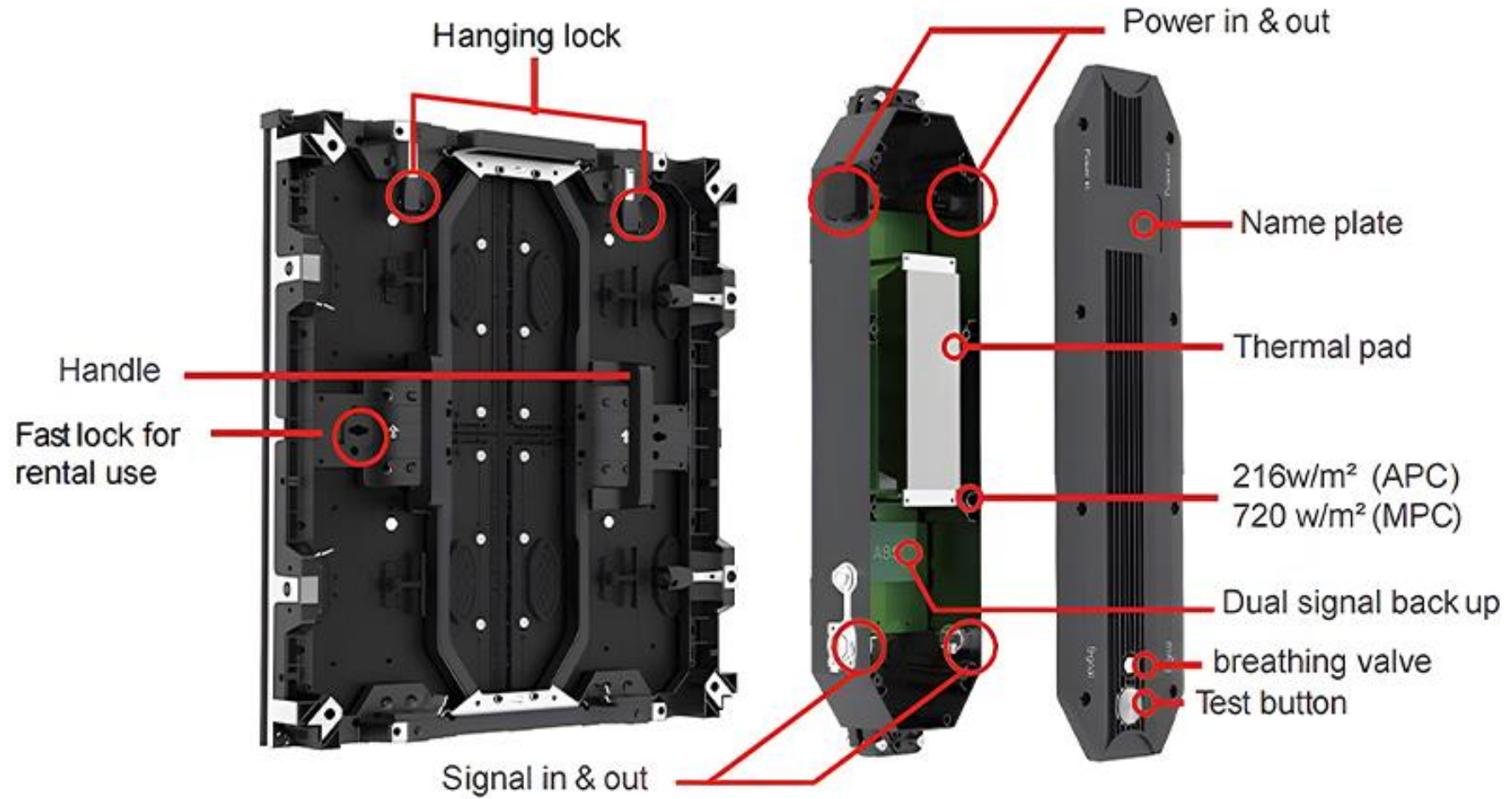
Theft-Proof: Invisible but higher security locking
ShockProof: Can be installed near railways or other areas.
Fall-Proof: Firmly fixed, no modules fall off even in strong winds



Full Front Accsee & Rear Access

The module, power supply ,receiving card and other components can all be taken out from the front of the panel. Meanwhile,rear maintenance is also available, which can be selected according to different needs.

Cabinet Structure



Cable free module with dual sockets



This design doesn't require the ribbon cable, so the signal connection of the modules is much better than common designs in the market. What's more, we use signal pin dual sockets which is easy to replace modules. There is no need to confuse about the direction.

High Brightness

The flip chip technology is adopted, and the same size chip has a large front light emitting area, and the brightness is higher than that of ordinary chips.

Brightness

Regular brightness \geq 1000nit

High brightness \geq 4000nit



Waterproof Level



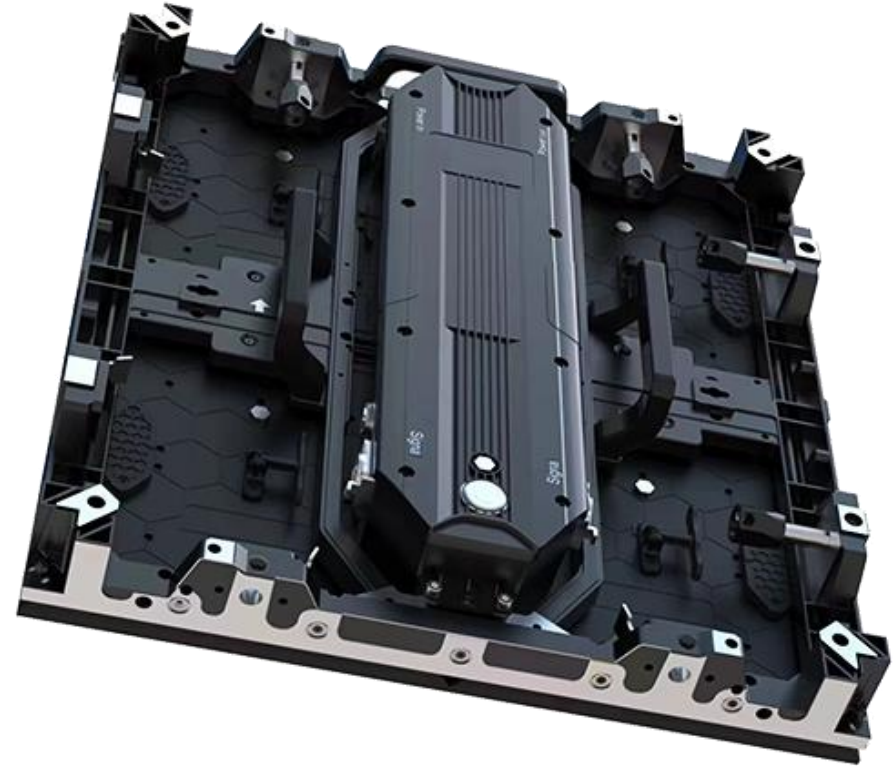
IP 65 Waterproof Grade

Compared with indoor displays, outdoor displays have stricter requirements on waterproof and dustproof, and Premteco displays adopt IP65 protection grade, which can effectively prevent waterproof and dustproof.

Better Heat Dissipation & High Reliability

We use die-cast aluminum box. Compared with traditional box, Our OSP PRO is thinner and lighter, which is more conducive to heat dissipation, and reduces transportation and pressure on buildings. Meanwhile, Modules and the power box are in different compartments. The heat generated by the modules won't affect the power box and they are heated independently.

High reliability: Thanks to the adoption of high-quality standard material for the screens, such as superb power supply, driving IC, and LED, the screen is able to work properly for more than 8 years.



High Refresh Rate



1920Hz



3840Hz

Premteco LED screens use high-quality materials. With the high refresh rate(up to 3840Hz) ensures the smoothness of every frame of the images, thus the LED display won't appear flicking on the highspeed camera. Meanwhile, the gray scale(up to 14bits to 24bits) , the overall color display effect is clearer and more vivid.

High Contrast Ratio & Excellent Visual Effect

Our OSP PRO series has excellent visual performance, because we use pure black substrate and high brightness flip chip, and the color contrast ratio is even better than 8000:1. At the same time, the flip-chip RGB chip has the same height, and the side visual effect has no module color difference. There is no bonding wire process, the chip is directly fixed on the pad, and it is more stable, Even in a strong light environment, the screen looks very clear and the visual effect looks perfect.

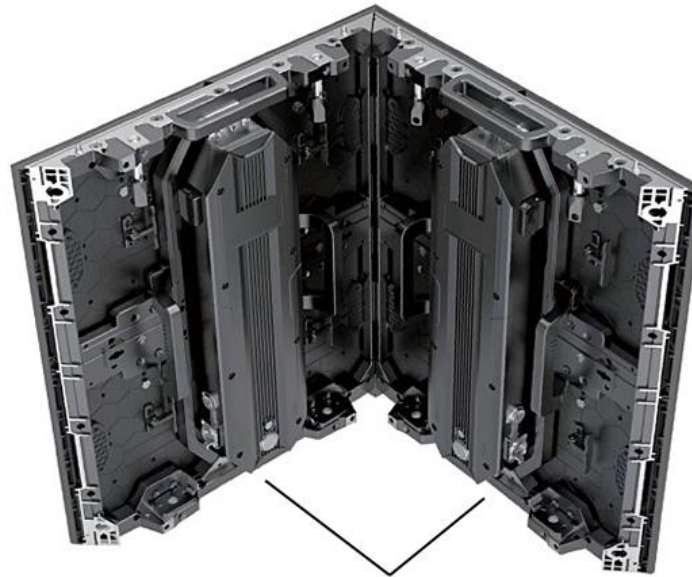


Innovative Cabinet Design

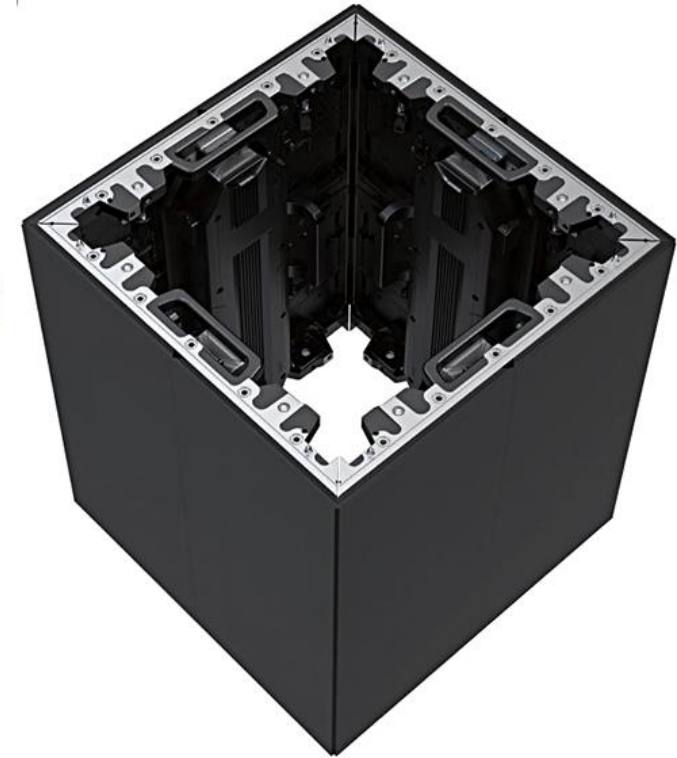
Our cabinet can be cut into a 45° angle and then plied into a 90 degree angle seamlessly, without the black line. This feature allows the screen to fit 90 degree shape wall-mounted installation perfectly.



MODULE90°



CABINET90°



Flip Chip Technology

Premteco OSP PRO series using flip chip technology, the lamp beads have larger luminous area, higher brightness, better heat dissipation capacity, longer product service life and better antistatic ability.

- **Higher brightness**
- **Better heat disipation**
- **Better antistatic**
- **Longer lifespan**



Common Cathode Design



Premteco outdoor small-pitch display screen, with dense lamp beads, will generate a lot of heat, and the temperature of outdoor is high. In order to solve the heat dissipation problem, we adopt the common cathode technology. In the common cathode mode, the R, G and B chips supply power separately, and the voltage and current are accurately distributed to the red, green and blue diodes. This independent and accurate power supply method improves the efficiency of the power supply, resulting in lower power consumption, and can reduce its own heat by about 40%. and lower pixel failure rate, thus improving the overall performance of the display screen and prolonging the screen lifespan.

GOB Technology

GOB is a technical process that uses epoxy glue to innovatively seal the surface of the module to form effective protection. To achieve true waterproof, moisture-proof, dust-proof, anti-scratch, anti-collision, anti-knock, anti-UV and other characteristics. It can also increase the ink color consistency and contrast of the product, and reduce the moiré effect of the product. At the same time, it can also increase the flatness of the module



Multiple Functions



Fixed Screen



Rental Screen



Floor Tile Screen

Golden Aspect Ratio Cabinet Size

The cabinet ratio is 8:9. Standard aspect ratio perfectly achieve full HD 4K, 8K resolutions



Application Fields

To fit every different scene, our products utilize superior materials with a concise and strong structure, and various installation methods make it flexible and easy to apply.

This product is usually used in

- **Truck Trailers;**
- **Scoreboards;**
- **Digital Out Of Home(DOOH).**



OSP PRO Parameters

| Item | P1.5 | P1.875 | P2.5 |
|-----------------------------|---|---|---|
| Pixel Pitch | 1.5mm | 1.875mm | 2.5mm |
| LED Type | SMD1010 | SMD1010 | SMD1010 |
| Module Resolution | 160dots × 180dots | 128dots × 144dots | 96dots × 108dots |
| Driving Mode | 1/30scan | 1/24scan | 1/18scan |
| Module Pixels | 115,200dots/m ² | 73,728dots/m ² | 41,472dots/m ² |
| Module Size | 240mm × 270mm | 240mm × 270mm | 240mm × 270mm |
| Cabinet Size | 480mm × 540mm × 66mm | 480mm × 540mm × 66mm | 480mm × 540mm × 66mm |
| Cabinet Resolution | 320dots × 360dots | 256dots × 288dots | 192dots × 216dots |
| Pixel Density | 444,444dots/m ² | 284,444dots/m ² | 160,000dots/m ² |
| Minimum Viewing Distance | ≥1.5m | ≥1.875 m | ≥2.5 m |
| Brightness | >4000nits | >4000nits | >3500nits |
| IP Grade | IP65 | IP65 | IP65 |
| Refresh Rate | 1,920Hz~3,840Hz | 1,920Hz~3,840Hz | 1,920Hz~3,840Hz |
| Gray Scale | 14bits~24bits | 14bits~24bits | 14bits~24bits |
| Viewing Angle | H:160° / V:160° | H:160° / V:160° | H:160° / V:160° |
| Maximum Power Consumption | 720W/m ² | 720W/m ² | 720W/m ² |
| Average Power Consumption | 216W/m ² | 216W/m ² | 216W/m ² |
| Input Voltage | AC110V~AC220V @ 50Hz / 60Hz | AC110V~AC220V @ 50Hz / 60Hz | AC110V~AC220V @ 50Hz / 60Hz |
| Operating Temperature | - 20℃~50℃ | - 20℃~50℃ | - 20℃~50℃ |
| Operating Humidity | 10%~90% | 10%~90% | 10%~90% |
| Cabinet Material | Die-casting Aluminum | Die-casting Aluminum | Die-casting Aluminum |
| Cabinet Weight | 9.5kg/panel | 9.5kg/panel | 9.5kg/panel |
| Operating System | Windows (Win7, Win8, etc.) | Windows (Win7, Win8, etc.) | Windows (Win7, Win8, etc.) |
| Signal Source Compatibility | DVI, HDMI1.3, DP1.2, SDI, HDMI2.0, etc. | DVI, HDMI1.3, DP1.2, SDI, HDMI2.0, etc. | DVI, HDMI1.3, DP1.2, SDI, HDMI2.0, etc. |