

# OR1 Plus Series

## Outdoor Rental LED Display



Light Weight



Advanced Lock System



Independent Power box



Climbing System



Anti-Collision



Accurate Curve System



90° 0 gap Design



Multiple Applications

# Cabinet Size

Size: 500mm x 1000mm x 74.3mm

Weight: 12.5Kg/panel

Maintenance: Front / Rear

Size: 500mm x 500mm x 74.3mm

Weight: 9 Kg/panel

Maintenance: Front / Rear



# Unique Lock System



## Side Curve Lock

Unique unilateral arc lock design with -6, -3, 0, +3, +6 degrees of internal and external arc splicing, meet various stage needs, to do the creative screen design.



## Automatic lock System

Innovation lock system for installation within 5s by one-man installation without tool

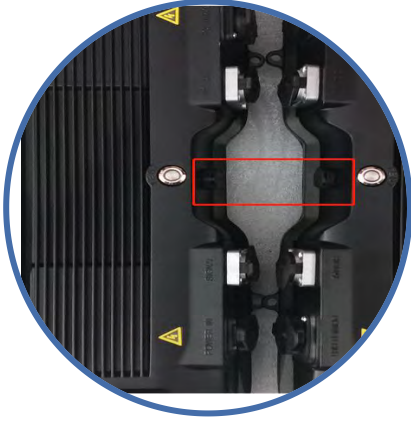
# Power Box



Detachable independent control box with PSU and receiving card for fast replacement.



# Power Box



## Cooling System

Louver heat sink structure, increasing its heat dissipation area, more effective.



## Breathable Valve

We add breathable valve in every power box to adjust the air pressure.



## Waterproof Ring

Prevent water damaging the components and prolong its lifetime.

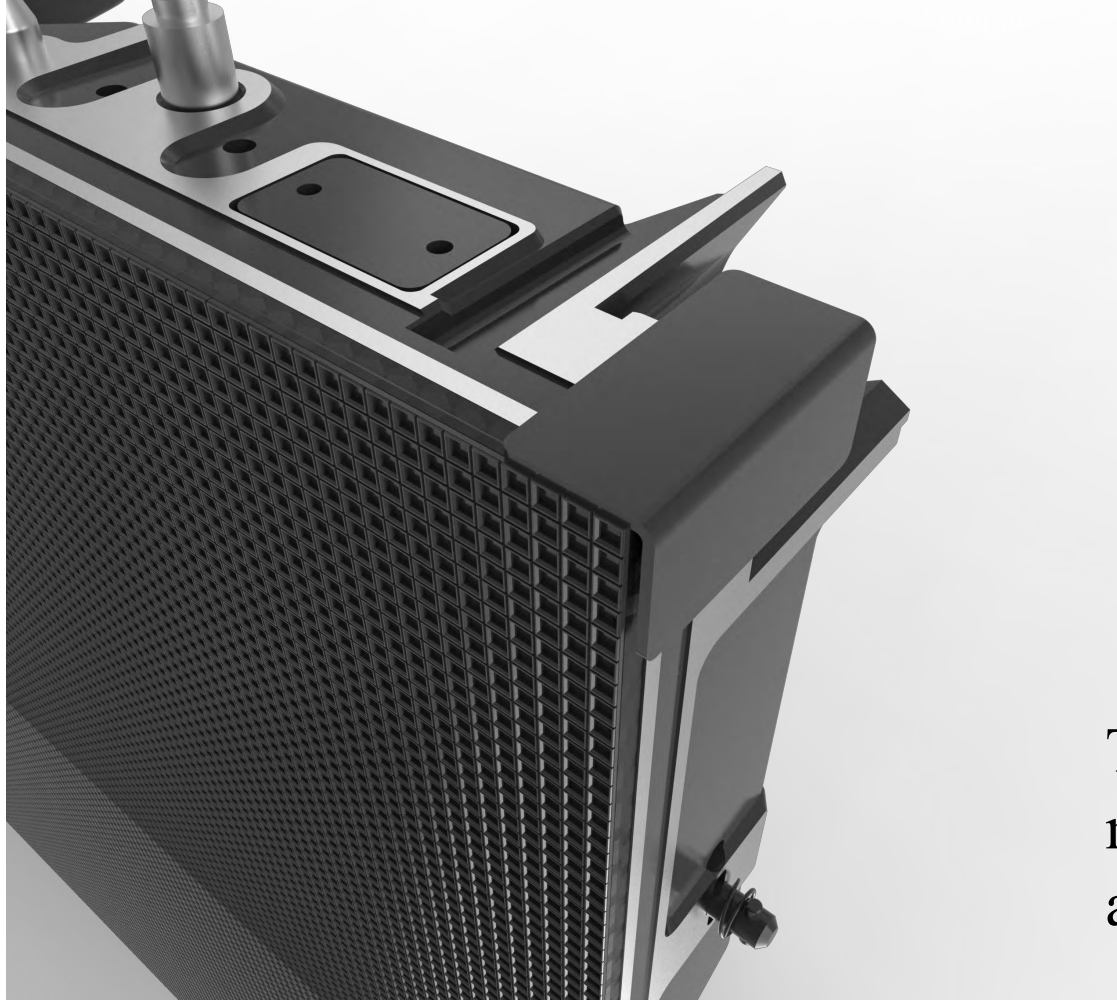
# Climbable Handle

The strong handle can be used as a ladder to climb up for fixing the problems if the faulty LED panel is several meters off the ground.

Foothold



# Double Corner Protection: **regular**



There are protectors on the corners of the modules and cabinet reduce damage rate and repair cost of the cabinet and SMD.

# Double Corner Protection: unique

We add additional die-casting aluminum corner to further strengthen the protection of leds.



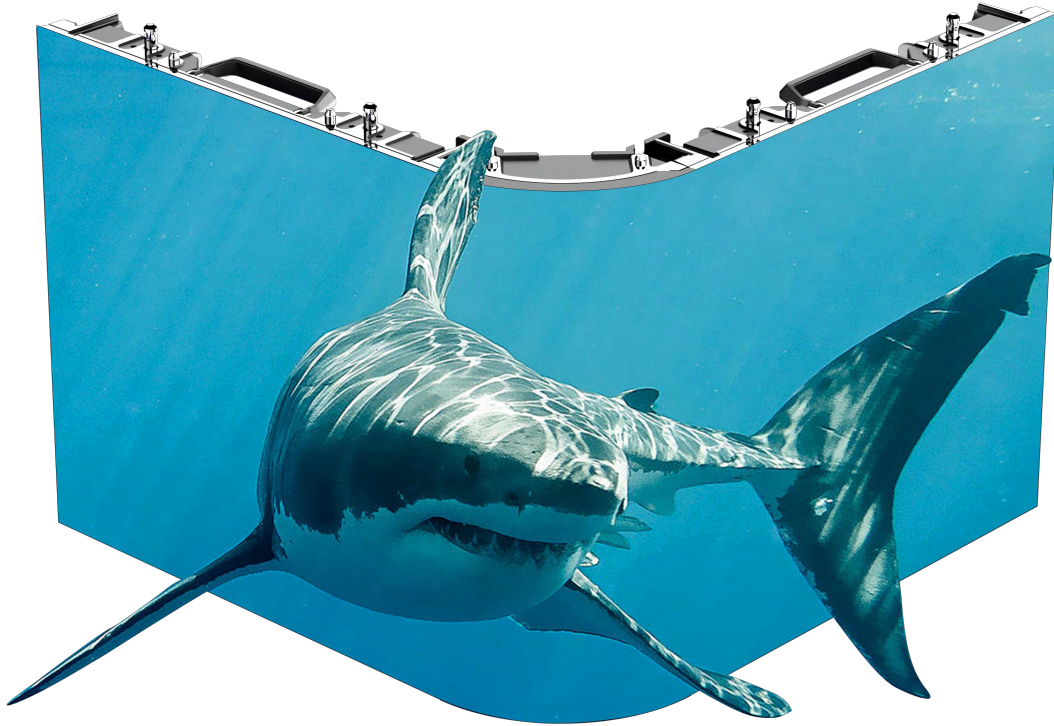


# Perfect radian splicing

## Accurate side curve system

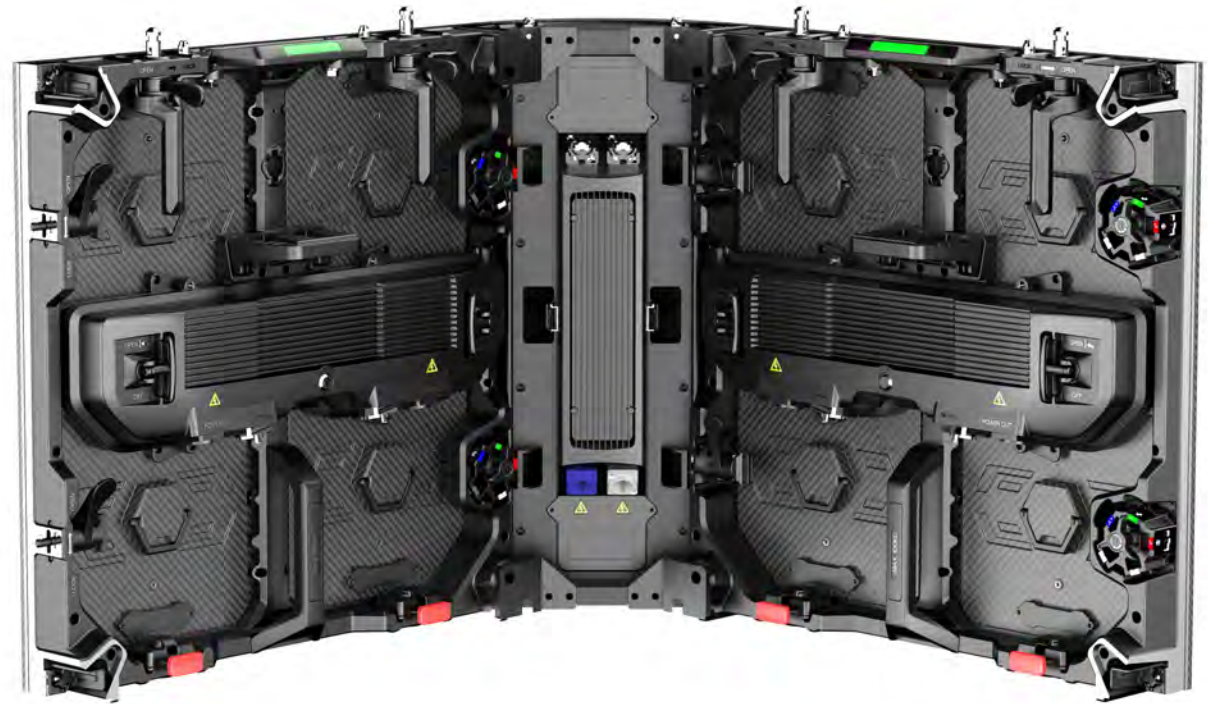
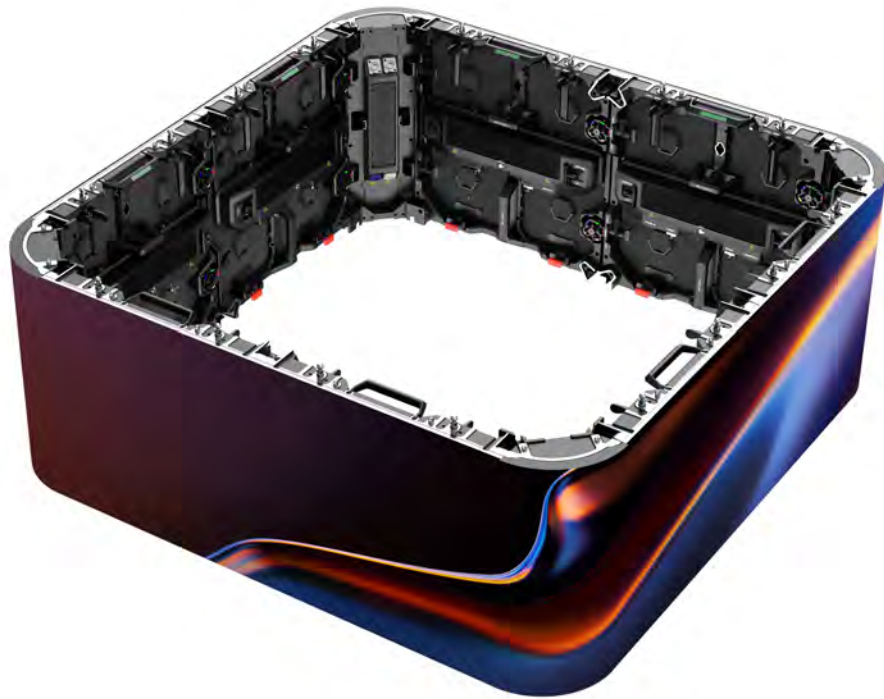


500mmx1000mm cabinet can do 90 degree round corner with 0 gap,  
the peripheral degree is 125.9.





500mm x 500mm cabinet also can do gapless 90 degree round corner.





## Multiple Installations

**Stacking installation:** Ground stacking makes your installation easier and faster during the events.

**Hoisting installation:** Hanged with hanging bar in the truss.



## Application Fields

To fit every different scene, the giant LED screen is made up of superior quality materials with the concise and strong structure. This product is usually used in:

- **Concerts;**
- **Stages;**
- **Events;**
- **Sports .**





## Parameter

Parameter					
Pixel Pitch (mm)	3.91mm	3.91mm	3.91mm	4.81mm	4.81mm
PixelDensity (dot/m²)	65,536pixels/sqm	65,536pixels/sqm	65,536pixels/sqm	43,264pixels/sqm	43,264pixels/sqm
LED Arrangement	SMD1921(White)	SMD1921(Black)	SMD2121(White)	SMD1921(White)	SMD1921(Black)
ModuleSize (mm * mm)	500*250	500*250	250*250	500*250	500*250
ModuleResolution (PX* PX)	128*64	128*64	64*64	104*52	104*52
ModuleWeight (kg)	1.2	1.2	0.6	1.25	1.25
ModuleThicknees(mm)	15.3	15.3	15.3	15.3	15.3
Cabinet Size (mm * mm)	500*1000	500*1000	500*500	500*1000	500*1000
CabinetWeight (Kg)	24.3±3%kg/m²	24.3±3%kg/m²	9±3%kg/m²	24.3±3%kg/m²	24.3±3%kg/m²
CabinetThickness(mm)	74.3mm	74.3mm	74.3mm	74.5mm	74.5mm
Drive Mode	Constant current	Constant current	Constant current	Constant current	Constant current
HorizontalViewing Angle (Deg)	160	160	160	160	160
VerticalViewing Angle (Deg)	90	90	90	100	100
GreyScale(bits)	≥15	≥15	≥15	≥15	≥15
RefreshRate (Hz)	≥3840Hz	≥3840Hz	≥3840Hz	≥3840Hz	≥3840Hz
Brightness (cd/m²)	4,500-5,000	3,800-4,000	4,000-5,000	4,500-5,000	3,800-4,000
Average Cabinet Power Consumption (W)	195W/sqm	210W/sqm	195W/sqm	195W/sqm	210W/sqm
Maximum Cabinet Power Consumption (W)	650W/sqm	700W/sqm	460W/sqm	650W/sqm	700W/sqm
Input Voltage (V)	AC110-220V	AC110-220V	AC110-220V	AC110-220V	AC110-220V
Working Temperature (°C)	-30°-55°C	-30°-55°C	-30°-55°C	-30°-55°C	-30°-55°C
Working humidity range (RH)	10%-95%	10%-95%	10%-95%	95%	95%
Waterproof Level	IP66/IP66	IP66/IP66	IP66/IP66	IP66/IP66	IP66/IP66
Working Environment	outdoor	outdoor	outdoor	outdoor	outdoor
Installtion Method	Hoisting, post-installation	Hoisting, post-installation	Hoisting, post-installation	Hoisting, post-installation	Hoisting, post-installation
Certificates	EMC CLASS B, CE ETL	EMC CLASS B, CE ETL	EMC CLASS B, CE ETL	EMC CLASS B, CE ETL	EMC CLASS B, CE ETL