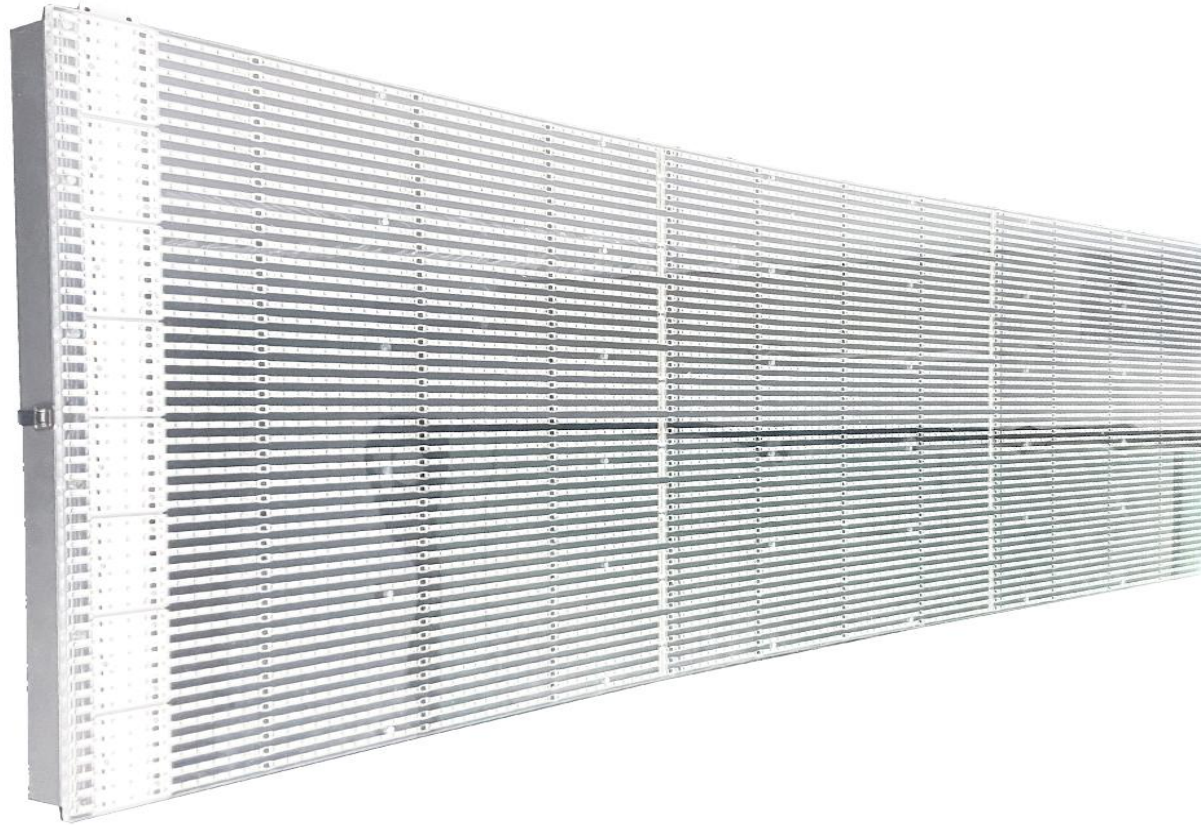


# T2 Series

Innovative LED Transparent Glass Display



Light and Slim



Good Heat Dissipation



Arbitrary cutting



High Brightness



High Transparency



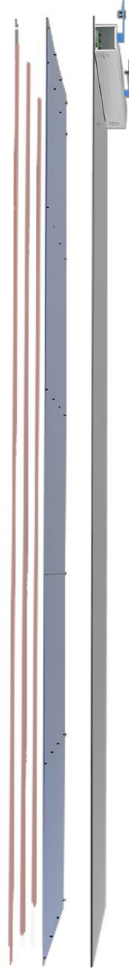
Economical and Eco-friendly



Fast and Easy Installation



Various Application



## **Light-Weighted and Thin**

Thickness: 66mm, save space

Weight: 7-8kg/panel

The modules is covered by PC, which has good heat resistance, high transparency, dustproof and certain waterproof function.

## Power Box

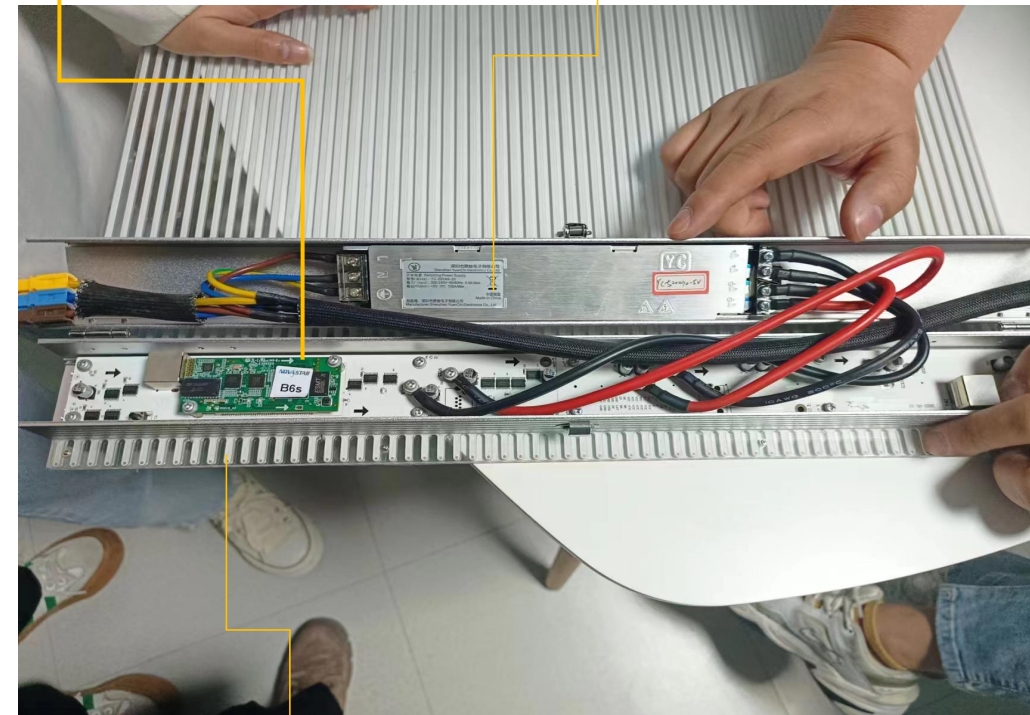
Instead of designed in the middle, the power box is designed on the sides, this will not destroy the consistency and esthetic of transparency.

The material of the power box is aluminum, which has lighter weight and better heat dissipation.



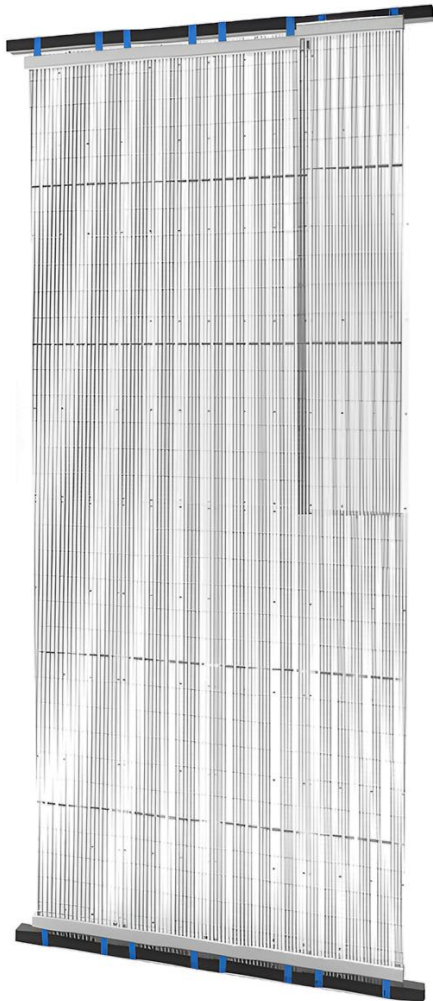
Hub card+receiving card

Power supply



Box Back cover

**After installation effect:**



## **Extreme Cabinet Length**

Maximum length of cabinet: up to 2.5m

Maximum length with totally pure transparency: up to 5m

This gives viewers a strong feeling of broader and more transparent vision.





## Arbitrary cutting in Cabinet Length

Regular Cabinet Size:

- 1m(w)x0.5m(h)
- 1.5m(w)x0.5m(h)      Brightness: up to 5000nits
- 2m(w)x0.5(h)        Brightness: up to 3500nits
- 2.5m(w)x0.5(h)      Brightness : up to 3000nits

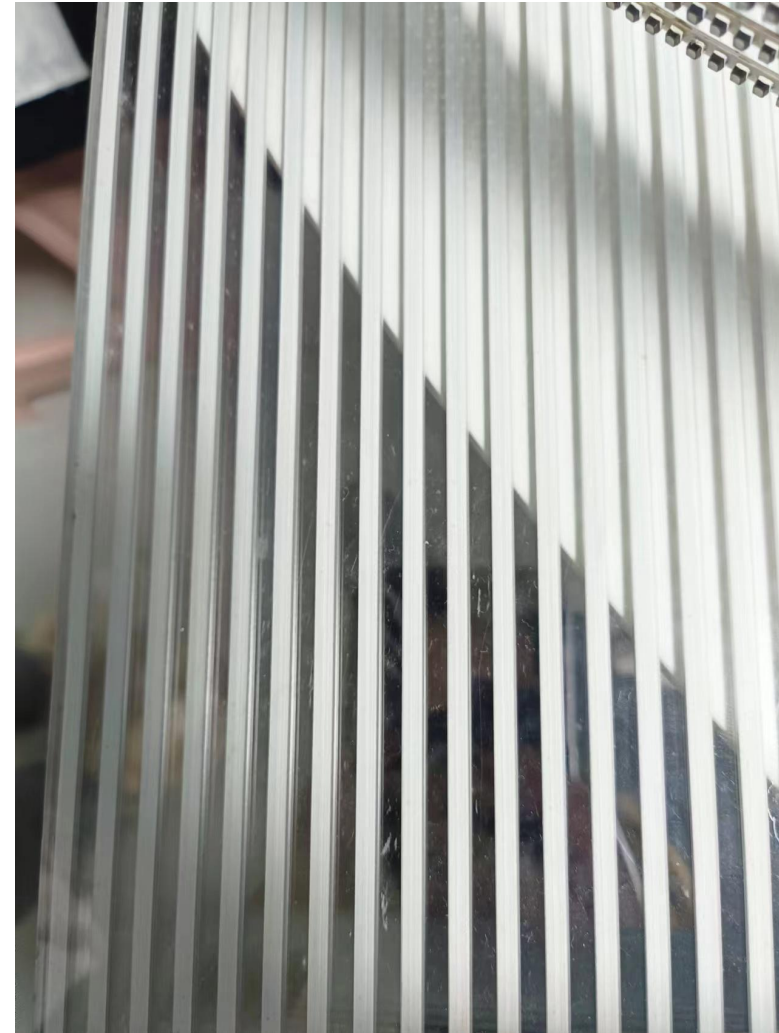
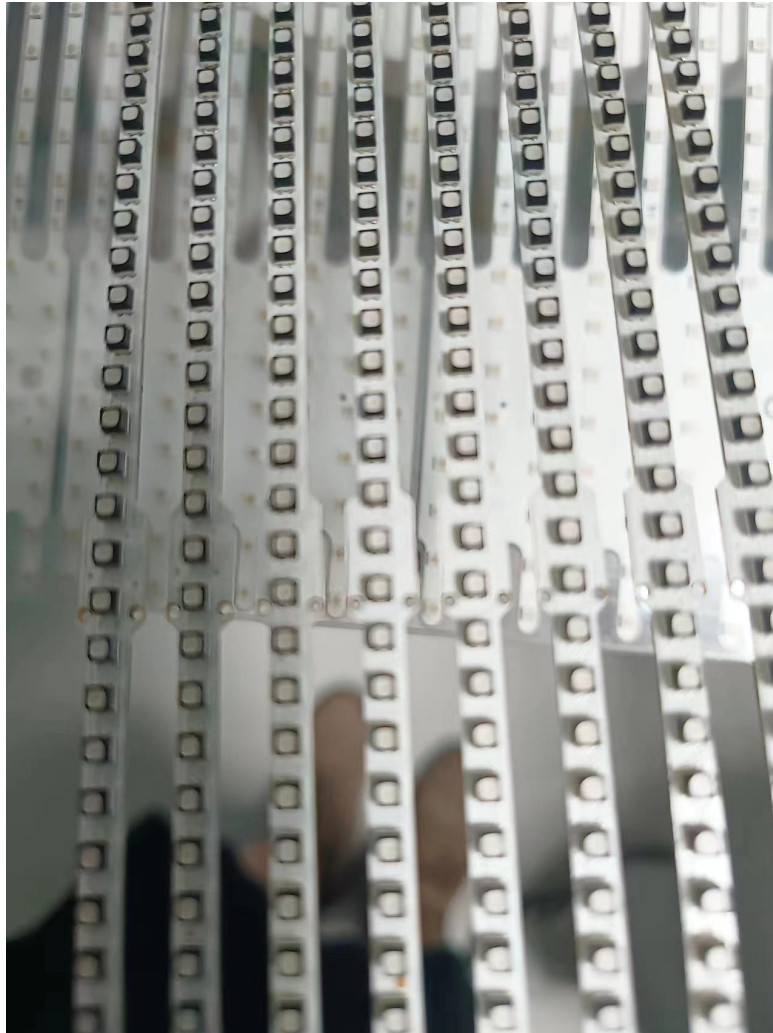
Customized Cabinet Size:

Our T2 serie supports arbitrary cutting in cabinet length according to clients' different needs



## High Transparency

Transparency up to 82% , unique 3D effect



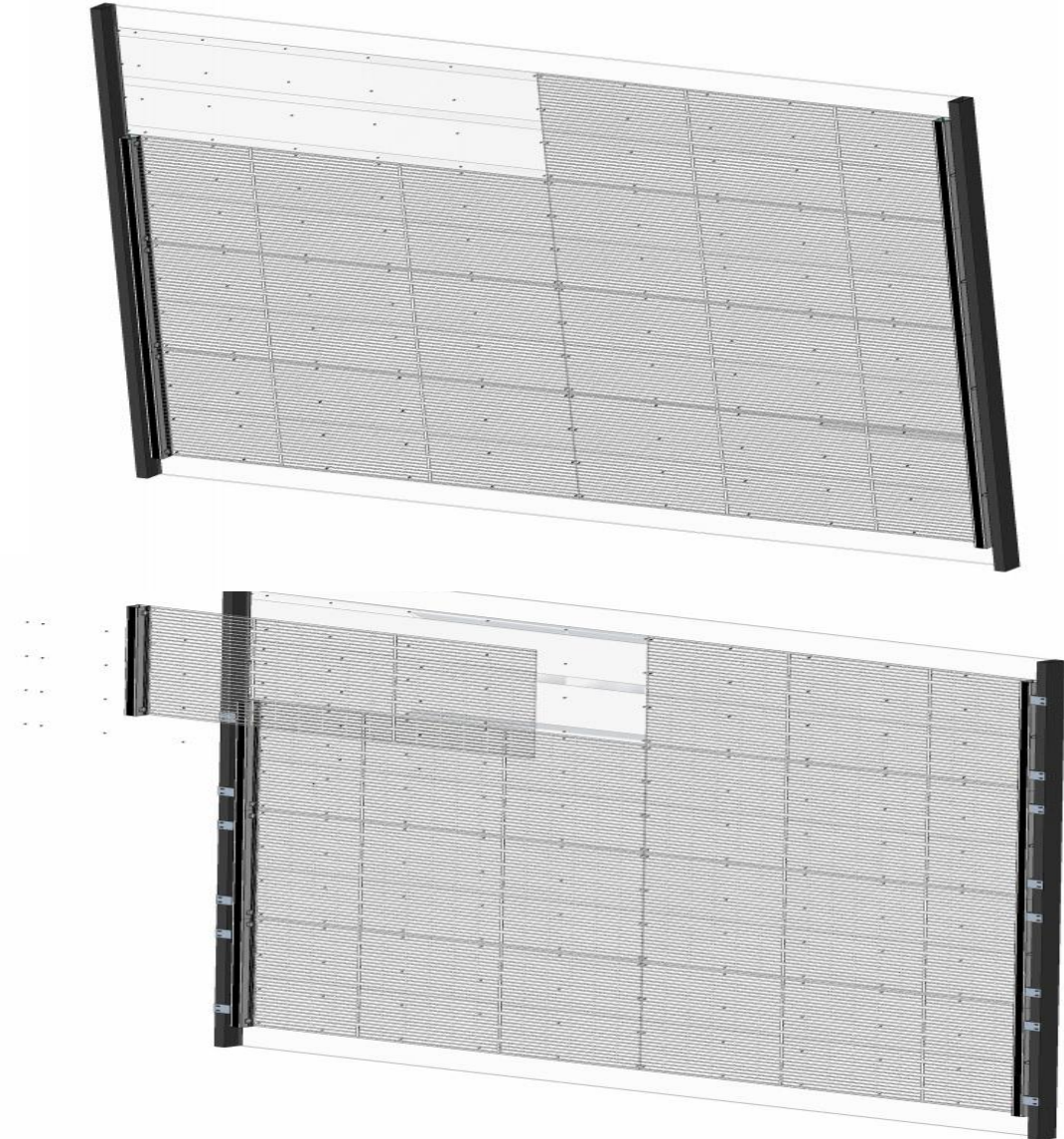


## Easier Maintenance

Fully back access is available.

There is no need to tear the whole cabinet off the screen when maintaining. Components like modules, power supply, receiving card can be removed from the back separately since they are screwed. It makes the maintenance more convenient and practical.

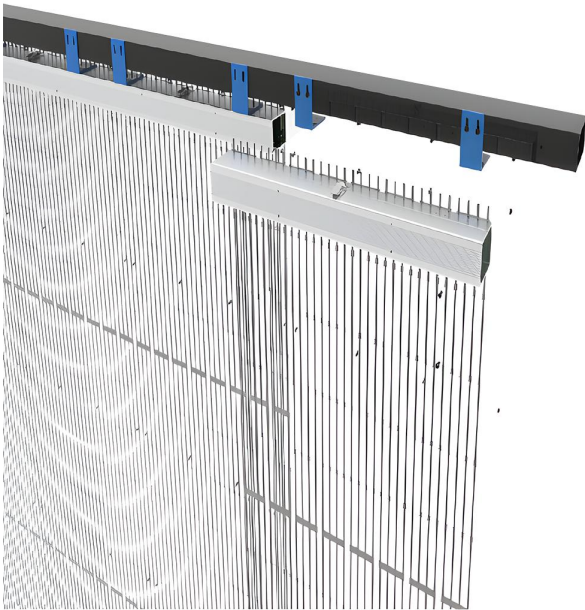
## Module Removal



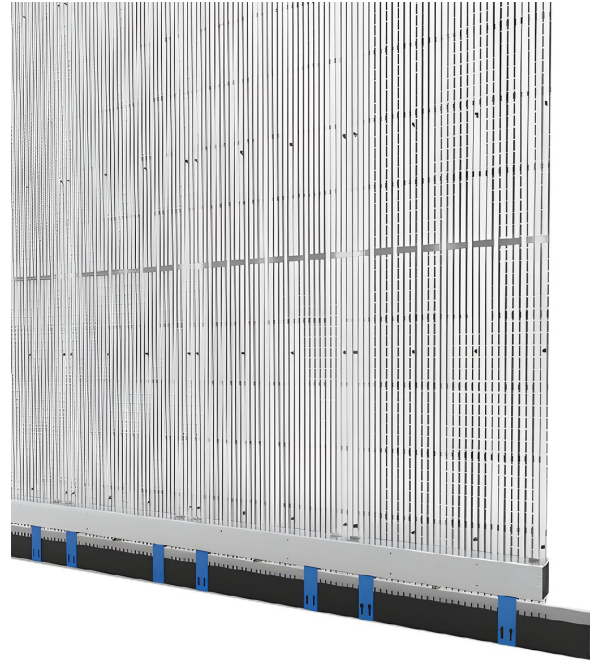
## Installation

No need structure, fast and easy installation,  
environment-friendly and energy-saving

Hanging



Stacking



Glass Mounting





**Application:**



# T2 Parameters

Item	P3.9	P7.8	P10.4	P15.6	P20.8
Pixel Pitch	3.9mm (W) / 7.8mm (H)	7.8mm (W) / 7.8mm (H)	10.4mm (W) / 10.4mm (H)	7.81mm (W) / 7.81mm(H)	10.4mm(W) / 10.4mm(H)
LED Type	SMD1921	SMD1921	SMD1921	SMD1921	SMD1921
Driving Mode	1/7s can	1/4s can	1/2s can	1/1s can	static
Module Size	1500mm × 62.5mm	1687.5mm × 62.5mm	1500mm × 62.5mm	1593.75mm × 62.5mm	1500mm × 62.5mm
Module Resolution	378dots × 8dots	216dots × 8dots	144dots × 6dots	102dots × 4dots	72dots × 3dots
Cabinet Size	1500mm × 500mm x 66mm	1687.5mm × 500mm x 66mm	1500mm × 500mm x 66mm	1593.75mm × 500mm x 66mm	1500mm × 500mm x 66mm
Cabinet Resolution	378dots × 64dots	216dots × 64dots	144dots × 48dots	102dots × 64dots	72dots × 24dots
Maximum Panel Length	2.5m	2.5m	2.5m	2.5m	2.5m
Pixel Density	32,256dots/m <sup>2</sup>	16,384dots/m <sup>2</sup>	9,216dots/m <sup>2</sup>	4,096dots/m <sup>2</sup>	2,304dots/m <sup>2</sup>
Minimum Viewing Distance	≥3.9 m	≥7.8 m	≥10.4 m	≥15.6 m	≥20.8 m
Transparency	56%	48%	60%	78%	82%
Brightness	3,500-6,000nits	3,500-6,000nits	3,500-6,000nits	3,500-6,000nits	3,000-3,500nits
IP Grade	IP30	IP30	IP30	IP30	IP30
Refresh Rate	1,920Hz~3,840Hz	1,920Hz~3,840Hz	1,920Hz~3,840Hz	1,920Hz~3,840Hz	1,920Hz~3,840Hz
Gray Scale	13bits~24bits	13bits~24bits	13bits~24bits	13bits~24bits	13bits~24bits
Viewing Angle	H:160° / V:160°	H:160° / V:160°	H:160° / V:160°	H:160° / V:160°	H:160° / V:160°
Maximum Power Consumption	600W/m <sup>2</sup>	600W/m <sup>2</sup>	600W/m <sup>2</sup>	600W/m <sup>2</sup>	600W/m <sup>2</sup>
Average Power Consumption	200W/m <sup>2</sup>	200W/m <sup>2</sup>	200W/m <sup>2</sup>	200W/m <sup>2</sup>	200W/m <sup>2</sup>
Input Voltage	AC110V~AC220V @ 50Hz / 60Hz	AC110V~AC220V @ 50Hz / 60Hz	AC110V~AC220V @ 50Hz / 60Hz	AC110V~AC220V @ 50Hz / 60Hz	AC110V~AC220V @ 50Hz / 60Hz
Operating Temperature	-20℃~65℃	-20℃~65℃	-20℃~65℃	-20℃~65℃	-20℃~65℃
Operating Humidity	10%~90%	10%~90%	10%~90%	10%~90%	10%~90%
Cabinet Material	Aluminum +PC	Aluminum +PC	Aluminum +PC	Aluminum +PC	Aluminum +PC
Cabinet Weight	8.75kg/panel	8kg/panel	7.25kg/panel	7.2kg/panel	7kg/panel
Operating System	Windows (Win7, Win8, etc.)	Windows (Win7, Win8, etc.)	Windows (Win7, Win8, etc.)	Windows (Win7, Win8, etc.)	Windows (Win7, Win8, etc.)
Signal Source Compatibility	DVI, HDMI1.3, DP1.2, SDI, HDMI2.0, etc.	DVI, HDMI1.3, DP1.2, SDI, HDMI2.0, etc.	DVI, HDMI1.3, DP1.2, SDI, HDMI2.0, etc.	DVI, HDMI1.3, DP1.2, SDI, HDMI2.0, etc.	DVI, HDMI1.3, DP1.2, SDI, HDMI2.0, etc.