

# MIPFLEX

Flexible LED Display-P0.9



Multiple Curves



Great Flatness



Slim Shape



High Reliability



High Resolution

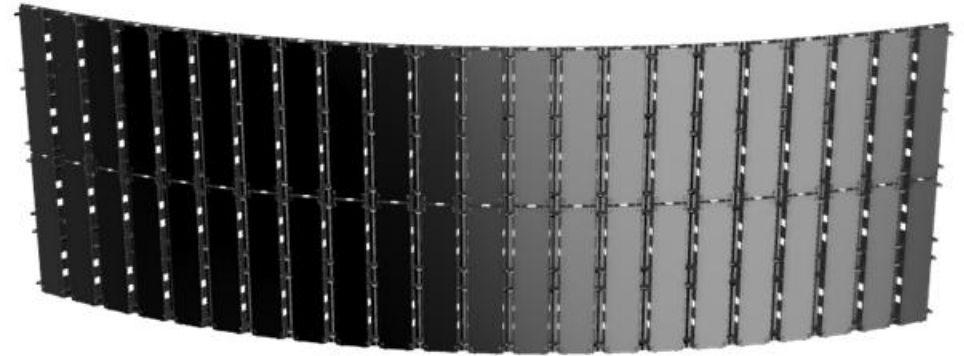


front maintenance

## Multiple Curves

The module is installed by strong magnetic adsorption and magnet turning technology, which allows for extreme bending and good screen flatness..

The minimum bendable diameter is 765mm, and the viewing angle is up to 160°, which is suitable for curved flexible displays such as stage backgrounds, exhibition halls, and indoor conference rooms, helping to improve the environment and create a special visual atmosphere



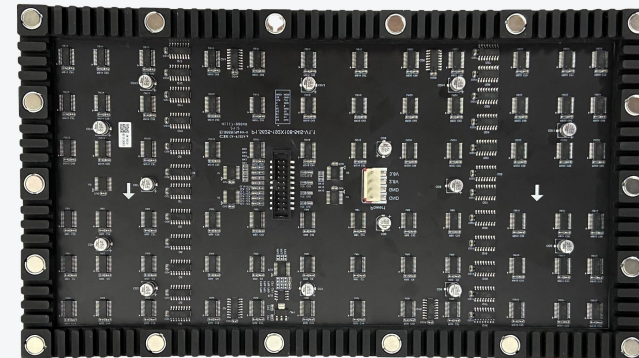
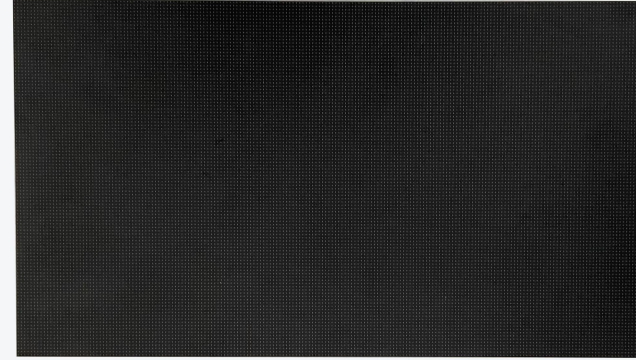


## **Reliable Display Performance**

The module has a standardized size design of 240mmx120mm, low current, low heat. Even when the LED module is shaped into an irregular display configuration, the components on the PCB remain stable.

## Smooth Surface

The cabinet structure adopts high-strength sheet metal sandblasted iron box and multi-link U-shaped reinforcement rib process design to effectively reduce the screen body splicing gap





## **Superior Resolution**

High contrast ratio of 5000:1

High brightness and high gray, refresh rate  $\geq 1920\text{Hz}$ , 12-16bit grayscale level, and the image is presented without delay and smearing.

## **Slim Shape**

The PCB board is made of flexible soft board, and the bottom shell is made of high-quality silicone material.

The module thickness is only 5.2mm, ultra-thin design, and takes up little space







## **front maintenance**

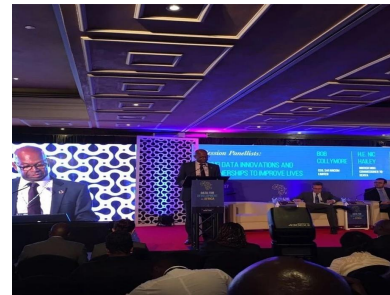
The power board is designed for front maintenance, which enables front installation and easy front maintenance with specific tools.



## Application Fields

In order to fit each different scene, the flexible LED display is made up of superior quality materials with the concise and strong cabinet. This product is usually used in:

- Stages
- Exhibition events
- Shopping centers





FL Ultra Parameters	
Item	P0.9
Pixel Pitch	0.93mm
LED Type	MIP0606
Module Resolution	256dots×128dots
Driving Mode	1/64scan
Module Pixels	32768dots
Module Size	240mm×120mm×5.25mm
Cabinet Size	240mm×960mm5.25mm
Cabinet Resolution	256dots×1024dots
Pixel Density	1137777 dots/m <sup>2</sup>
Minimum Viewing Distance	≥0.9mm
Brightness	500nits~650nits
IP Grade	IP45
Refresh Rate	3840Hz
Gray Scale	14bits~22bits
Viewing Angle	H:160° / V:140°
Maximum Power Consumption	330W/m <sup>2</sup>
Average Power Consumption	100W/m <sup>2</sup>
Input Voltage	AC100V ~ AC240V @ 50Hz / 60Hz
Operating Temperature	- 20℃~50℃
Operating Humidity	20% ~ 85%
Cabinet Material	Die-casting Aluminum
Cabinet Weight	6kg/m <sup>2</sup>
Operating System	Windows (Win7, Win8, etc.)
Signal Source Compatibility	DVI, HDMI1.3, DP1.2, SDI, HDMI2.0, etc.