

AP1 Series

Outdoor LED Display Banner –P1.8, P2.5, P3, P4, P3.91, P4.8



Light Weight



Stable Performance



Thin Screen



High Brightness



Various Designs



Easy Operation

Outdoor Advertisements Player

AP1 series are our premium outdoor LED advertising displays, also known as LED totems. Designed for high-traffic public spaces such as shopping plazas, train stations, and airports, these displays deliver vibrant and dynamic content for various outdoor advertising applications.

Available in multiple pixel pitch options including P1.8, P2.5, P3, P3.91, P4, and P4.8, the AP1 series offers exceptional image clarity and reliability to meet diverse promotional needs.



Standard Sizes Overview

Thickness:

Single-sided Totem: 183mm

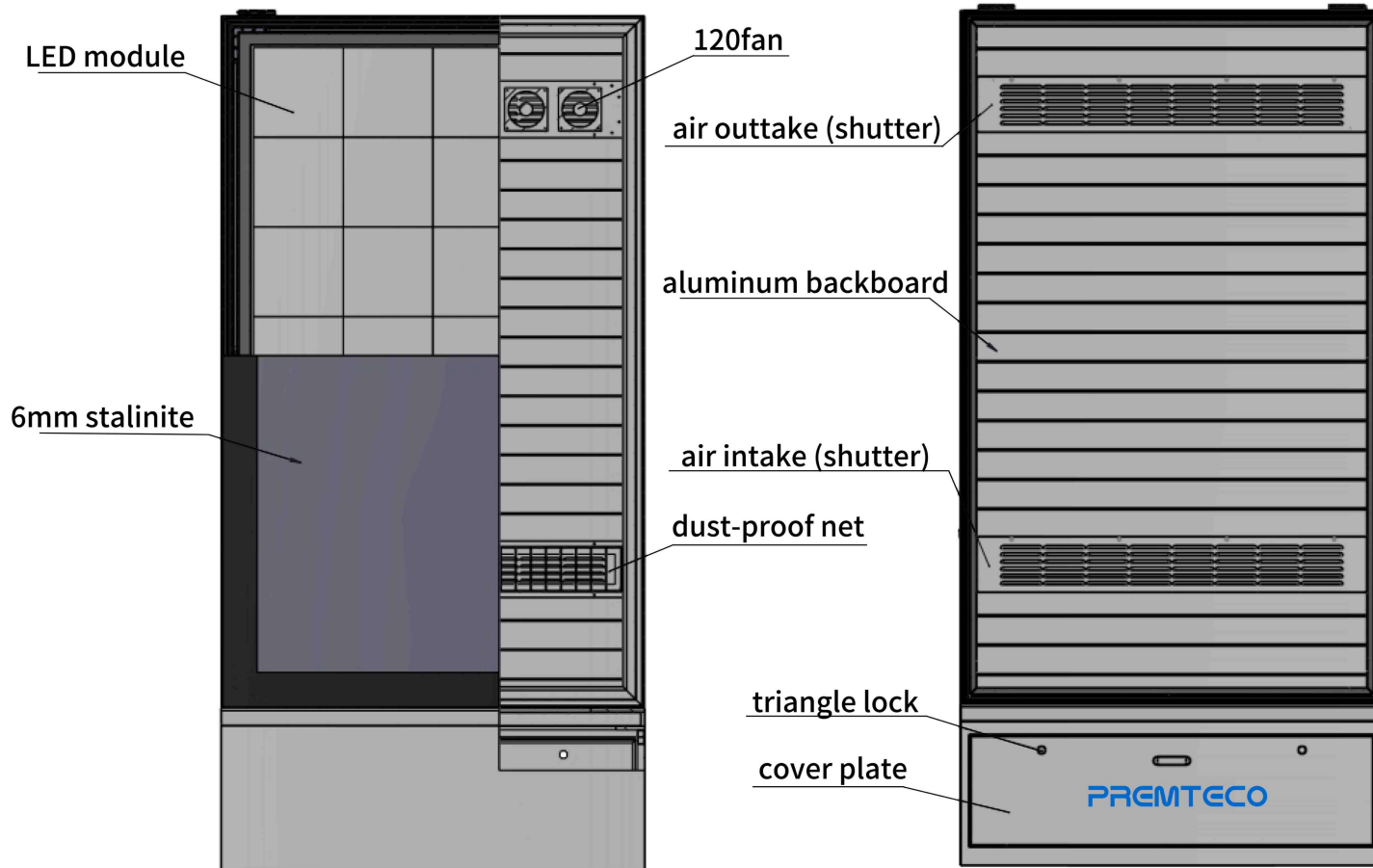
Double-sided Totem: 288mm



P1.8, P2.5, P3.07, P4



P3.91. P4.8



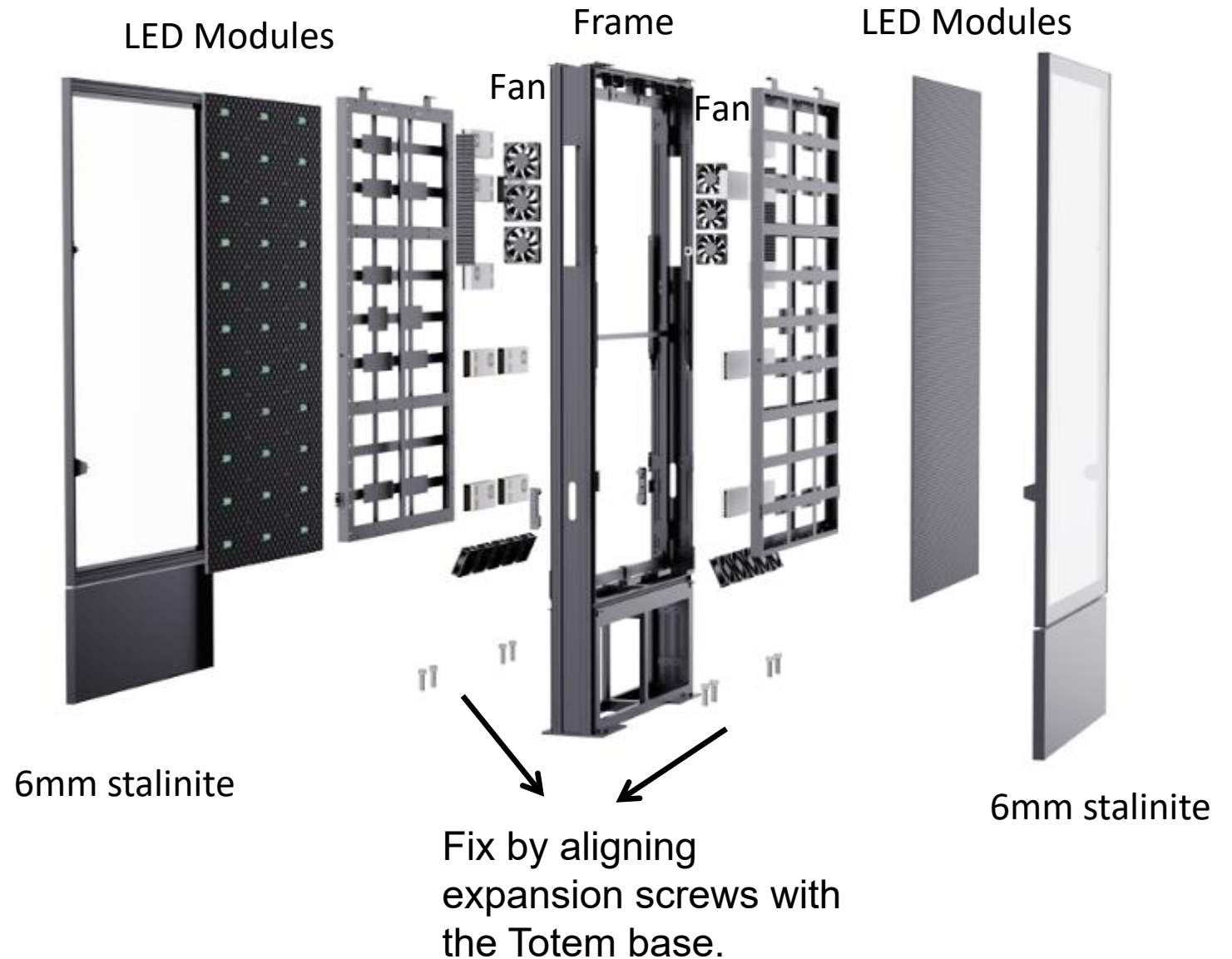
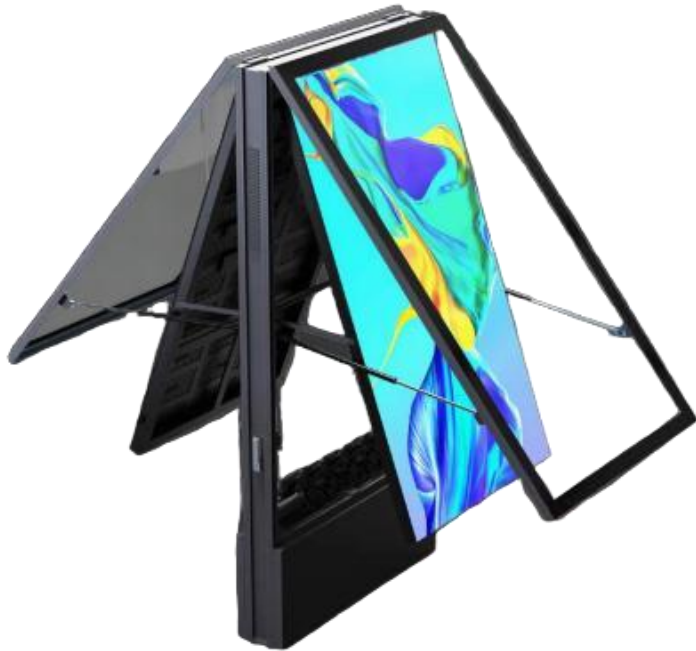
High Technical

Our AP1 LED displays are built with premium materials for enhanced durability and performance: an aluminum backplate ensures efficient heat dissipation, while a 6mm tempered glass front panel offers robust protection for the LEDs against impacts and environmental factors.

- **Gray scale 16 bits**
- **IP65**
- **Refresh rate 3840Hz**

Modular design, high strength

Our AP1 Totem is engineered for exceptional durability, featuring a high-strength tempered glass shell and reinforced frame designed to deliver outstanding impact resistance.



10,000:1 Contrast with Anti-Glare Brilliance

Our AP1 Totem combine anti-glare tempered glass with a 10,000:1 native contrast ratio, delivering exceptional image clarity and color performance even in high-light environments. The micro-etched surface minimizes reflections while preserving deep blacks and vibrant contrast, all protected by a scratch-resistant coating for lasting reliability.

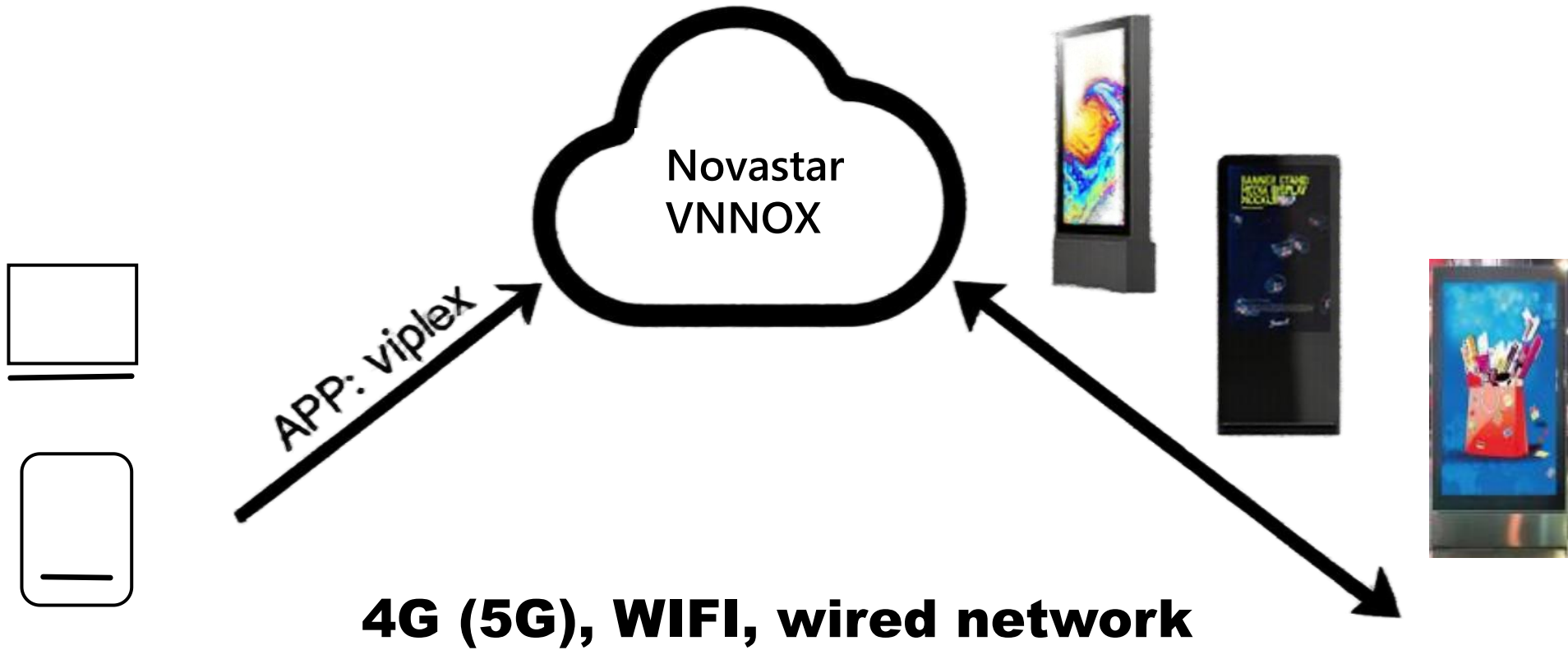


Close-Range Management for Instant Convenience

Our AP1 Totem is designed for effortless operation and management. It features a built-in multimedia player with 4G/5G connectivity, Wi-Fi, wired Ethernet, USB, HDMI, and more. Simply connect your mobile device to the player's built-in Wi-Fi hotspot, and use the dedicated app to manage the digital signage and update content with ease.



Smart Management of Multiple Totems



Good heat dissipation

We utilize premium raw materials and sophisticated cabinet design to deliver exceptional product performance. The product excels in heat dissipation and offers enhanced dust and water resistance, ensuring outstanding stability. Meticulously selected components, a reliable power supply, and an innovative PCB layout further guarantee superior operation and long-term durability.



High Brightness

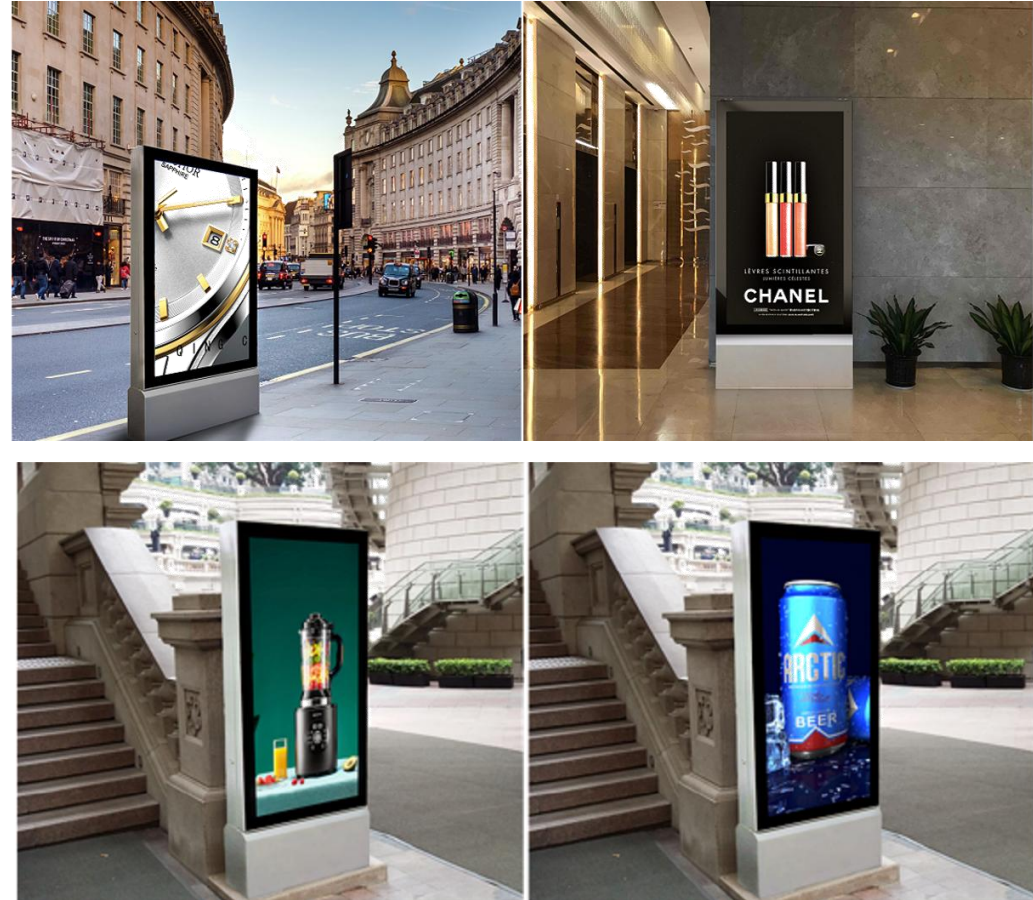
Advanced LED materials are employed, delivering a remarkable screen brightness of up to 5000 nits. This ensures exceptional clarity and visibility even under direct sunlight.



Application Fields

To fit every different scene, our products utilize superior materials with the concise and strong structure. This product is usually used in:

- **Mall Advertisement;**
- **Outdoor Advertising;**
- **Digital Out Of Home(DOOH).**



Model	P1.8	P2.5	P3.07	P4.0	P3.91	P4.81
Pixel Pitch (mm)	1.8605	2.5	3.076	4	3.91	4.81
LED Lamp Beads	SMD1415	SMD1415	SMD1415	SMD1921	SMD1921	SMD1921
Pixel Density (pixel/m²)	288,895	160,000	105,626	62,500	65,536	43,264
Module Size (W x H mm)	320x160	320x160	320x160	320x160	250x250	250x250
Module Resolution	172x86	128x64	104x52	80x40	64x64	52x52
Screen Size	960x1920mm	960x1920mm	960x1920mm	960x1920mm	1000x1750mm	1000x1750mm
Screen Resolution	516x1032	384x768	312x625	240x480	256x448	208x364
Outer Frame Size	Single side: 1140x2480x183mm; Double sides: 1140x2480x228mm	Single side: 1140x2480x183mm; Double sides: 1140x2480x228mm	Single side: 1140x2480x183mm; Double sides: 1140x2480x228mm	Single side: 1140x2480x183mm; Double sides: 1140x2480x228mm	Single side: 1180x2380x183mm; Double sides: 1180x2380x228mm	Single side: 1180x2380x183mm; Double sides: 1180x2380x228mm
Weight	Single side: 235kg/pc; Double sides: 315kg/pc	Single side: 235kg/pc; Double sides: 315kg/pc	Single side: 235kg/pc; Double sides: 315kg/pc	Single side: 235kg/pc; Double sides: 315kg/pc	Single side: 230kg/pc; Double sides: 300kg/pc	Single side: 230kg/pc; Double sides: 300kg/pc
Brightness (cd/m²)	4500-5000nits	4500-5000nits	4500-5000nits	4500-5000nits	5000 - 5800nits	5000 - 5800nits
Waterproof Grade (Front/Rear)	IP55/IP55	IP65/IP55	IP65/IP55	IP65/IP55	IP65/IP55	IP65/IP55
Viewing Angle	140°/120°	140°/120°	140°/120°	140°/120°	140°/120°	140°/120°
Power Consumption (w/m²)	670w/m²	670w/m²	670w/m²	670w/m²	670w/m²	670w/m²
Average Consumption (w/m²)	200w/m²	200w/m²	200w/m²	200w/m²	200w/m²	200w/m²
Refresh Rate	3840Hz	3840Hz	3840Hz	3840Hz	3840Hz	3840Hz
Input Voltage	AC110V-AC220V@50Hz/60Hz	AC110V-AC220V@50Hz/60Hz	AC110V-AC220V@50Hz/60Hz	AC110V-AC220V@50Hz/60Hz	AC110V-AC220V@50Hz/60Hz	AC110V-AC220V@50Hz/60Hz
Operating Temperature	-20°C~50°C	-20°C~50°C	-20°C~50°C	-20°C~50°C	-20°C~50°C	-20°C~50°C
Operating Humidity	10%~90%	10%~90%	10%~90%	10%~90%	10%~90%	10%~90%
Operating System	Windows(Win7,Win8,etc.)	Windows(Win7,Win8,etc.)	Windows(Win7,Win8,etc.)	Windows(Win7,Win8,etc.)	Windows(Win7,Win8,etc.)	Windows(Win7,Win8,etc.)
Signal Source Compatibility	DVI,HDM,SDI,DP	DVI,HDM,SDI,DP	DVI,HDM,SDI,DP	DVI,HDM,SDI,DP	DVI,HDM,SDI,DP	DVI,HDM,SDI,DP